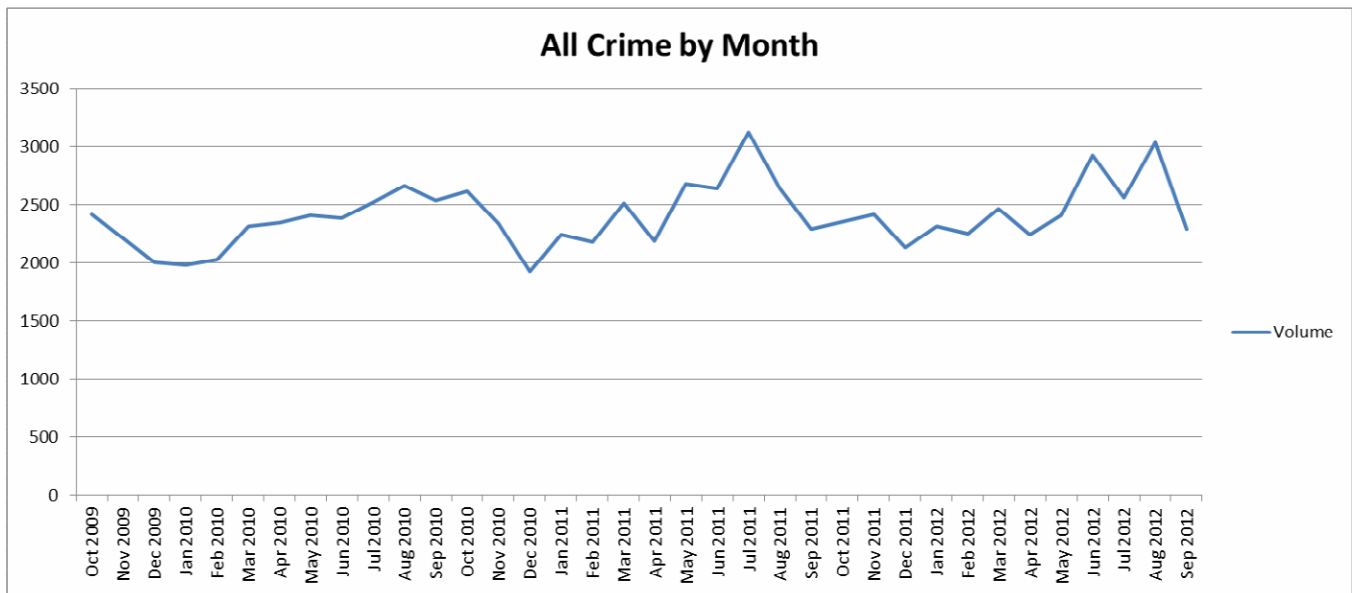


APPENDIX 1

Tower Hamlets  
Community Safety Partnership Plan  
2013 – 2016

DRAFT

## Key Facts about Crime and Disorder in Tower Hamlets



Between 1<sup>st</sup> October, 2011 and 30<sup>th</sup> September 2012, the Community Safety Partnership has achieved the following:

- Reduced the number of Most Serious Violence offences (Grievous Bodily Harm and Murder) per 1000 of the population by 22% (102 less offences than the same period the year before)
- Reduced the number of Gun Crime Offences by 5% (3 less offences than the same period the year before)
- Reduced the number of Residential Burglaries by 6% (84 less offences than the same period the year before)
- Reduced the number of Thefts From Motor Vehicles by 28% (668 less offences than the same period the year before)
- Reduced the number of Serious Youth Violence victims by 27% (80 less victims than the same period the year before)
- Reduced the number of young people entering the criminal justice system by 27% (64 less young people)
- Reduced the number of Anti-Social Behaviour reports to the Police by 11.9% (3130 less reports)
- Reduced the number of arson incidents by 21% (156 less incidents)
- Increased the number of drug users in treatment, so that the borough now has the highest number in treatment compared to all other London Boroughs

## **Foreword by Mayor of Tower Hamlets and Co-Chairs of CSP**

Welcome to Tower Hamlet's Community Safety Plan covering the three years 2013/14 to 2015/16.

The Community Safety Plan sets out how the Police, Council, Probation, Health, Fire Service, voluntary and community sectors and individuals can all contribute to reducing crime, disorder, anti-social behaviour, substance misuse and re-offending to keep Tower Hamlets a safe place.

This Plan aims to reduce the number of crimes and anti-social behaviour in the borough, but in some categories, it aims to increase the number of reports, due to under reporting where historically victims don't feel confident enough to report it to us. By increasing reporting and therefore recording, we will then be able to offer support to those victims and take appropriate action against the perpetrators.

The people in our communities are not just numbers or statistics, crime and disorder impacts on not only the victim's but also the wider community's quality of life, so we understand how important it is for you that we tackle it in a timely, efficient and effective way.

We are confident that this plan not only captures and addresses the priorities that have been identified through our analysis of evidential information and performance in the borough, but also the concerns of the people of Tower Hamlets.

We recognise that not only do we have a duty to continue to tackle crime and disorder but we all (both organisations and members of the public), have a duty to prevent it from happening in the first place.

As a partnership we are responsible for community safety and community cohesion. We will work with our local communities to ensure we protect the vulnerable, support our communities to develop and make Tower Hamlets a safer place for everyone.

## Contents

Introduction	5
About the Partnership	6
Governance	7
Governance Structure	10
CSP and Sub-groups	11
Highlights from 2012/13	15
Strategic Assessment 2012	19
Performance	20
Public Consultation	29
Decision on Priorities	30
Priorities for 2013 – 16	31
Priority A – Gangs and Serious Youth Violence	32
Priority B – Anti-Social Behaviour	36
Priority C – Drugs and Alcohol	39
Priority D – Violence	42
Priority E – Hate Crime and Cohesion	46
Cross-Cutting Priorities	50
Cross-cutting Priority 1 – Public Confidence	51
Cross-cutting Priority 2 – Reducing Re-offending	53

## Introduction

The Tower Hamlets Community Safety Partnership (CSP) is required by law to conduct an annual assessment of crime, disorder, anti-social behaviour, substance misuse and re-offending within the borough, this is known as the Strategic Assessment. It is also required to consult members of the public and the wider partnership on the levels of the above. The Strategic Assessment and the findings of the public consultation are then used to produce the partnership's Community Safety Plan.

Since 2011, the CSP has had the power to decide the term of its Community Safety Plan. In 2012, the CSP chose to have a one year plan, this decision was based on the unique budgetary pressures on partner agencies and the anticipated demand on service from London hosting the 2012 Olympic and Paralympic games.

This Community Safety Plan will run for a period of 3 years from 1<sup>st</sup> April 2013 to 31<sup>st</sup> March 2016, with performance against the priorities within it reviewed on an annual basis in the form of the annual Strategic Assessment. The Community Safety Partnership Subgroups each produce an Action/Delivery Plan to reflect both the Priorities of the Community Safety Partnership and their own subgroup priorities. If due to external pressures or levels of performance against the priorities, the Community Safety Plan can be amended on an annual basis within its three year term.

Reducing crime and anti-social behaviour requires a careful balance between reducing recorded incidents, encouraging reporting and addressing negative perceptions of those who believe its levels are worse than they are in reality.

This plan will ensure that the issues that are most important to the people of Tower Hamlets will be addressed in the most appropriate and cost effective way. The partnership are committed to ensuring the low levels of particular crimes and issues are maintained but have also identified through local evidence and perception, a number of priorities that require particular partnership focus in the coming three years.

This Plan sets out the main objectives of the CSP and how it plans to achieve those objectives.

## About The Partnership

The Tower Hamlets Community Safety Partnership (CSP) is a multi-agency strategic group set up following the Crime and Disorder Act 1998. The partnership approach is built on the premise that no single agency can deal with, or be responsible for dealing with, complex community safety issues and that these issues can be addressed more effectively and efficiently through working in partnership. It does this by overseeing the following:

- Service Outcomes
- Leadership and Partnership Working
- Service Planning & Performance Management
- Resource Management & Value for Money
- Service Use and Community Engagement
- Equality & Diversity

The CSP is made up of both Statutory Agencies and Co-operating Bodies within the Borough. The Statutory Agencies are:

- Tower Hamlets Police
- London Borough of Tower Hamlets
- London Probation Trust
- London Fire Brigade
- Tower Hamlets Public Health / NHS

The Mayor's Office for Policing and Crime (MOPAC), replaced the Metropolitan Police Authority in February 2012, is no longer a statutory agency of the CSP, but becomes a co-operating body. Representatives from MOPAC and the Tower Hamlets Police and Community Safety Board are both members of the CSP.

The above are supported by key local agencies from both the Public and Voluntary Sectors. Registered Social Landlords (RSLs) have a key role to play in addressing crime and disorder in their housing estates and these are represented by the Chair of the Tower Hamlets Housing Forum. Victims and witnesses of crime and disorder are represented on the CSP by Victim Support. The extensive network of voluntary organisations within the borough, are represented by Tower Hamlets Council for Voluntary Services' Chief Executive.

Representation on the CSP is through attendance by senior officer / person within that organisation, with the authority to make strategic decisions on behalf of their agency/organisation.

Partners bring different skills and responsibilities to the CSP. Some agencies are responsible for crime prevention while others are responsible for intervention or enforcement. Some have a responsibility to support the victim and others have a responsibility to deal with the perpetrator. Ultimately the CSP has a duty to make Tower Hamlets a safer place for everyone.

## **Governance**

The Community Safety Partnership is one of 4 Community Plan Delivery Groups which are held responsible by the Partnership Executive for delivering the aims/actions contained within the Community Plan.

### **Partnership Executive**

The Partnership Executive is the borough's Local Strategic Partnership and brings key stakeholders together to create and deliver the borough's Community Plan. Members of the Partnership include the Council, Police, NHS, other statutory service providers, voluntary and community groups, faith communities, businesses and citizens. It acts as the governing body for the Partnership, agreeing priorities and monitoring performance against the Community Plan targets and holding the Partnership to account through active involvement of local residents. The Community Plan is an agreement that articulates the aspirations of local communities and sets out how the Borough will work together to realise these priorities.

### **Community Plan**

The overall vision for the community plan is to improve the lives of all those living and working in the borough. The Community Plan includes 4 main priorities of which 'A Safe and Cohesive Community' and Tower Hamlets will be a safer place where people feel safer, get on better together and difference is not seen as a threat but a core strength of the borough. To make Tower Hamlets a Safe and Cohesive Community the Partnership will focus on achieving the following objectives:

- 1: Focusing on crime and anti-social behaviour
- 2: Reducing re-offending
- 3: Reducing the fear of crime
- 4: Fostering greater community cohesion
- 5: Tackling violent extremism

### **Mayor's Priorities/Pledge**

As part of his election manifesto, the Mayor of Tower Hamlets committed to pledges under 7 key areas, one of these was Community Safety/Cohesion. Under this Pledge, the Mayor and the Community Safety Partnership are committed to:

- Continue no means-tested charges for Telecare Alarms
- Put a more visible uniformed police presence on our streets and estates
- Bring our diverse communities together to build 'One Tower Hamlets'

## **Mayor's Office for Policing and Crime (MOPAC)**

The Mayor of London's Office for Policing and Crime, under the remit of being London's Police and Crime Commissioner has several responsibilities regarding Community Safety Partnerships. They are:

- a duty to consult the communities (including victims) and to publish a Police and Crime Plan
- determining police and crime objectives
- are a co-operating body on Community Safety Partnerships
- have the power to 'call in' poor performing Community Safety Partnerships

As of February 2013, MOPAC are in the process of consulting the public on their draft Police and Crime Plan 2013 – 17. The proposed priorities within that Plan are:

- Strengthen the Metropolitan Police Service and drive a renewed focus on street policing
- Give victims a greater voice
- Create a safer London for women
- Develop smarter solutions to alcohol and drug crime
- Help London's vulnerable young people

In addition to the above, the Mayor of London has placed special emphasis on a number of additional public safety challenges and concerns of Londoners, which include:

- Violence Against Women and Girls
- Serious Youth Violence
- Business Crime

It proposes to set a total 20% reduction target for the following group of 'key crimes' across the whole of London by 2016:

- Reduction in the number of Personal Robberies
- Reduction in the number of Residential Burglaries
- Reduction in the number of Thefts From Motor Vehicles
- Reduction in the number of Thefts of Motor Vehicles
- Reduction in the number of Thefts From a Person
- Reduction in the number of Violence with Injury incidents
- Reduction in the number of acts of Vandalism

In addition to the above, it also proposes the following individual targets to achieve by 2016:

- 20% Increase in Public Confidence in the Police
- 20% Reduction in Re-offending by Young People Leaving Custody
- 20% Reduction in Court Delays
- 20% Increase in Compliance with Community Sentences



MOPAC is also responsible for the management and allocation of the Community Safety Fund monies from Central Government. Allocations for funding will be made on a 'Challenge Fund' approach, which will determine the nature and scale of funding to individual boroughs based on their proposal's alignment with the Police and Crime Plan Priorities.

### **Community Safety Partnership Sub-Groups**

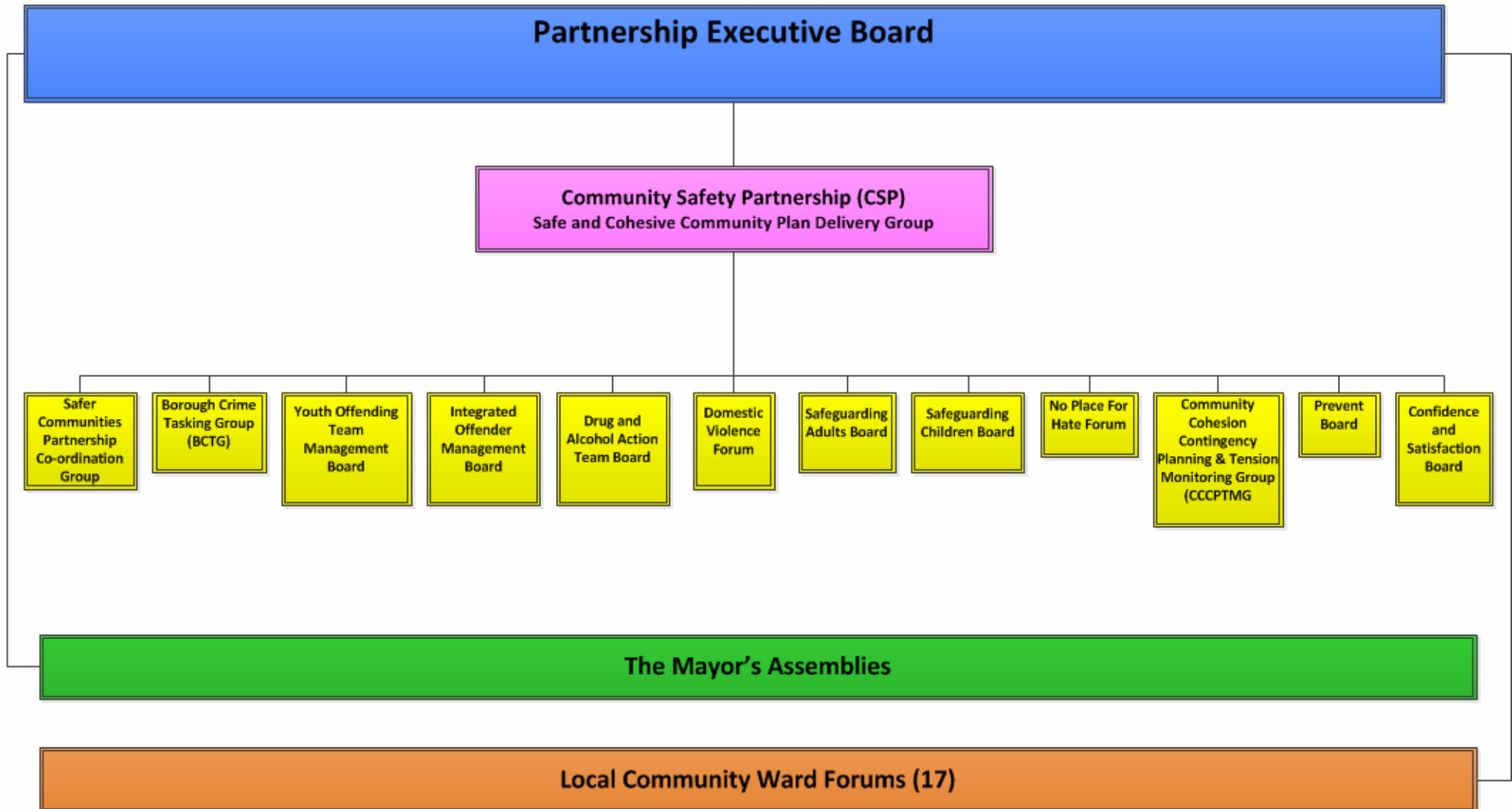
In order to co-ordinate and deliver activity in the various areas of crime, disorder, anti-social behaviour, substance misuse and reducing re-offending, the CSP has a sub-structure of groups and boards. Each sub-group/board is responsible for producing a delivery plan which aims to address the overarching partnership priorities and fulfil any additional priorities they see fit as a sub-group/board. They are responsible for ensuring there are resources available to deliver their actions and if needed, produce and submit detailed funding applications to enable this.

Subgroups are represented through their Chairperson on the Community Safety Partnership, who is required to provide a bi-monthly update on performance against their delivery plan.

Subgroups are made up of senior officers within key agencies who have a direct responsibility for service delivery in these specific areas of work.

The diagram on the next page illustrates the current Community Safety Partnership governance structure.

# Community Safety Partnership Governance



DRAFT

# **Community Safety Partnership and Subgroups**

## **Community Safety Partnership**

The CSP as it is known amongst the partners is accountable for the reduction of crime, disorder, anti-social behaviour, substance misuse and reoffending as well as increasing community cohesion under the Community Plan Partnership Structure. It will determine priorities and oversee the statutory and non-statutory boards responsible to deliver against these priorities. The CSP meets on a bi-monthly basis and is co-chaired by the Tower Hamlets Police Borough Commander and the Tower Hamlets Deputy Mayor with responsibility for Community Safety. Membership of the CSP is at organisational Chief Executive/Officer level.

## **Youth Offending Team Management Board**

The YOT Management Board oversees the youth offending multi-agency team which comprises of staff from: the Council (Education Social Care and Wellbeing, and the Youth Service), Police, Probation and Health. The team works with young people from arrest through to sentencing. Staff provide services including bail and remand management and Pre-Sentence reports to the Youth, Magistrates and Crown Courts and work with young people subject to reprimands and final warnings from police, and those charged, convicted and given community and custodial sentences. The team also works with young people and the wider community to prevent young people entering the criminal justice system.

## **Safeguarding Children Board**

This multi-agency board comprises of lead officers from; Health; Police; Housing; Education Social Care and Wellbeing; Commissioning Bodies; Voluntary Sector; Probation; Legal Services; Department for Work and Pensions and Social Services who are the lead agency. The board co-ordinates activity aimed at ensuring that vulnerable children are protected through the application of LBTH's Child Protection Policy. In addition to reporting to the CSP, the Board reports to the Health and Wellbeing Board on an annual basis.

## **Safeguarding Adults Board**

This multi-agency board comprises of lead officers from; Health; Police; Housing; Education; Commissioning Bodies; Voluntary Sector; Probation; Legal Services; Department for Work and Pensions, London Fire Brigade and Social Services who are the lead agency. The board co-ordinates activity aimed at ensuring that vulnerable adults are protected through the application of LBTH's Adult Protection Policy. In addition to reporting to the CSP, the Board reports to the Health and Wellbeing Board on an annual basis.

## **Drug and Alcohol Action Team Board**

This board is chaired by the Corporate Director of Communities, Localities and Culture, with membership representing the CLC DAAT team, health services, the Metropolitan Police Service, London Probation Service, Public Health and Education, Social Care and Wellbeing. It is a statutory board with responsibilities for co-ordinating and commissioning services relating to drug / alcohol issues in the borough including; drug / alcohol treatment for adults and young people, prevention and behaviour change, licensing and regulation / enforcement.

## **Domestic Violence Forum**

The Domestic Violence Forum is chaired by the Head of Community Safety and oversees the borough's multi-agency approach to addressing domestic violence against men, women and young people. This includes sexual violence, trafficking, prostitution, sexual exploitation, dowry abuse, female genital mutilation, forced marriage, so called 'honour' based violence, stalking and harassment which are the Borough's strands within its Violence Against Women and Girls Plan.

Membership comprises of approx. 80 organisations representing both statutory and voluntary services providers in the borough. The forum takes place quarterly and has oversight of the Multi-Agency Risk Assessment Conference (The MARAC), the Specialist Domestic Violence Court, The DV One Stop Shop, The Housing & Health DV drop-in services, The LBTH Domestic Violence duty line, training and all safeguarding matters related to domestic abuse. The Forum is ultimately responsible for ensuring that appropriate services are provided within the borough for both domestic violence victims and those perpetrating violence against them.

## **Borough Crime Tasking Group**

The board was established as part of the programme to join together partnership service delivery in the localities. It meets on a fortnightly basis and uses an analytical product/profile on current/emerging crime and anti-social behaviour issues to task police resources to respond. The group is chaired by the Police Borough Commander and the membership includes various ranking police officers. The London Fire Brigade and Tower Hamlets Homes are represented on group in addition to the following officers from the council; Head of Community Safety, Head of Enforcement & Markets, ASB Analyst and Surveillance & Intelligence Officer.

### **Safer Communities Partnership Co-ordination Group**

This group is made up of operational managers from Safer Communities Service within the Council and is responsible for the tasking of council resources to respond to emerging local issues and concerns based on an analytical product/profile of emerging/current community safety issues. The group is chaired by the Head of Safer Communities and is also attended by other operational managers from across the partnership.

### **Integrated Offender Management Board**

This group is responsible for the management of offenders in the community. The board is chaired by a Police Superintendent and brings together a range of activity including the Priority and Prolific Offender Scheme, the Youth Offending Team, Probation and the Drugs Intervention Programme. The objective of this board is to increase community safety, community confidence and reduce the level of re-offending of identified individuals.

### **Community Cohesion Contingency Planning and Tension Monitoring Group (CCCPTMG)**

This group is chaired by the Service Head of Corporate Strategy and Equalities and acts as an operational tension monitoring group. The group is made up of representatives from the Interfaith Forum, the London Muslim Centre, the Council of Mosques, Rainbow Hamlets, Tower Hamlets Housing Forum, Youth Services, Tower Hamlets Police, London Fire Brigade, the Council's Safer Communities Service, Corporate Safety and Civil Protection, Communications and One Tower Hamlets

### **Preventing Violent Extremism Programme Board**

This board is chaired by the Council Service Head for Corporate Strategy and Equality; it operates as a distinct board with responsibility for delivering the local Prevent programme. The board is made up of officers from One Tower Hamlets, Youth Services, Tower Hamlets Police, NHS Tower Hamlets, Safer Communities, Communications, London Fire Brigade and the Council's Education, Social Care and Wellbeing Directorate.

### **No Place For Hate Forum**

The forum brings key agencies together to work in partnership to make Tower Hamlets a better place to live, work and visit by developing and promoting a co-ordinated response to race and hate crimes. It aims to protect and support victims, deter perpetrators, challenge prejudice and hate, which ultimately contributes to creating a safer, more cohesive community. The Forum meets on a quarterly basis, is chaired by the Chair of the borough's Interfaith

Forum, with members from both statutory and voluntary organisations, all of whom represent specific areas or communities concerning hate crime.

### **Confidence and Satisfaction Board**

The confidence and satisfaction of the community in our shared approach to crime and cohesion are key success measures. The group is chaired by the Police Borough Commander, with representatives from the Council and the Police & Community Safety Board. It has an overview of activity to ensure that community views and concerns are understood and addressed both efficiently and effectively. It also ensures that residents have access to relevant information, including feedback on action taken.

DRAFT

## Highlights from 2012/13

The Community Safety Partnership faced a challenging year in 2012/13, with cuts to resources (both financial and human), organisational restructures and the added pressure on service delivery from the Olympic and Paralympic Games in the summer months. However, partners still managed to reduce crime and disorder in the borough.

During the summer the borough saw an increase in visitors to the borough from all over the world, coped with a severely restricted transport infrastructure (main arterial roads in/out of the borough designated part of Olympic Route and Alternative Route Networks) and hosting the Victoria Park Live Site.

### **Domestic Violence:**

The last 12 months has seen extensive developments in the services provided by the LBTH Domestic Violence Team. We opened up the boroughs first DV One Stop Shop in partnership with the Police Community Safety Unit and have implemented a further 2 weekly drop-in services in partnership with Housing & Health. This has not only increased the reporting of domestic violence substantially, but raised awareness of our services which has led to a 400% increase in DV1 referrals to the team.

We have provided extensive training to both the statutory & voluntary sector organisations and are currently supporting agencies to develop their own DV policies & procedures.

### **Drugs and Alcohol:**

The DAAT Board Launched our Substance Misuse Strategy 2012-15 in 2012. It increased the number of drug and alcohol users accessing treatment so that the borough now has the highest number of drug users in treatment in the whole of London. It increased the number of Drug Intervention Programme referrals into treatment so this too is the highest in the whole of London. The DAAT Implemented Alcohol Treatment Satellites in GP surgeries and the Royal London Hospital, which improves accessibility for those who need it most. Through the Somali Engagement Action Plan, it commissioned a Somali Link Worker service to improve access to services for the borough's Somali community. We were also recognised for our 'Hidden Harm' work by being named 'runner-up' in the London Safeguarding Awards.



### **Anti-Social Behaviour:**

The use of an anti-social behaviour order or ASBO, are seen as an important tool used by the police and partners as a non-judicial order to prevent offending and improve the behaviour within Tower Hamlets. There are currently 62 ASBO's, of those 16 have been obtained in the past year, 4 relate directly to Anti-Social Behaviour and 5 have been obtained for alcohol related ASB. There are currently 6 gang related orders, which is an area that the police intend to concentrate on, to address the gang and serious youth violence issues. Local partners also utilise Anti-Social Behaviour Injunctions (ASBI's) and Acceptable Behaviour Contracts (ABC's).

Arson across the borough has fallen by 37% over the last 12 months, this has been achieved through Fire Brigade crews working alongside partners in the Council to identify rubbish "hotspots" and ensure the sites are cleared before arson is committed. The firework period, which after many years of high numbers of arson incidents, saw incidents fall dramatically this November following partnership working between LFB, Police Safer Neighbourhood Teams and Trading Standards/Licensing to limit the sale of fireworks.

### **Reduction of first time entrants in Criminal Justice System:**

We have continued to reduce and prevent the number of young people entering the criminal justice system for the first time through our partnership working between Police and YOTs Pre-court/Triage Team.

The latest Ministry of Justice figure published in Feb 2013, reported that over the 12 month period ending in September 2012, we have seen the lowest number of young people entering the criminal justice system for the first time. The report confirmed that during this period 167 young people entered the criminal justice system compared to 231 in the previous 12 month. The YOT Pre-court/triage team dealt with 213 young people during this reporting period.

Furthermore, the first time entrants rate per 100,000 - 10-17 year old receiving their first reprimand, warning or conviction for the same periods has also seen an improvement from 1,288 down to 799.

### **Integrated Offender Management:**

During 2012/13 the IOM Board and Team have successfully supported and provided 8 individuals with treatment and provision of on-going support, so that none of them are currently committing offences. This has resulted in these individuals no longer committing burglaries and other related criminal offences and providing for a safer community.

### **Confidence and Satisfaction:**

Tower Hamlets Police have worked to engender improved professionalism amongst its staff so that a quality service is provided to all victims of crime and Anti-Social Behaviour, as well as responding more effectively to calls for Police assistance. This has resulted in an improvement in Customer Confidence in 2012/13 to date (Feb 2013), which we will further build on in the coming 3 years.

### **Hate Crime and Cohesion:**

12 Hate Crime Third Party Reporting Centres have been maintained, which have received 80 reports since the 2008 re-launch. Victim Support have trained 6 Specialist Hate Crime Volunteers to support victims and are offering support to both victims and witnesses of hate crime through the court process. All victims of hate crime have, where possible been visited in person by the Police Community Safety Unit, who also now have a 24 hour specialist advice line for partnership officers. The Hate Incident Panel has reviewed 73 cases from April – September 2012, which resulted in further action taken in 14 of these.

### **Community Cohesion Contingency Planning and Tension Monitoring Group (CCCPTMG):**

The CCCPTMG has undertaken a partnership approach to both tackling and reducing tensions in a number of areas. The group were actively involved with the planning of protocols to tackle any cohesion related issues that may arise from the Olympics, in particular around Team USA being based at Mile End Park. In addition to this, work has been undertaken throughout the year to tackle the threat posed by the English Defence League. This included a dedicated seminar to look at our response to the English Defence League and also supporting Waltham Forest in their successful application banning the EDL from marching in their borough.

We have also been at the forefront of reducing local tensions as a result of the recent 'Muslim patrol' videos that had appeared online. This has led to the arrest of 5 individuals, none of whom reside in Tower Hamlets.

The Group has been involved in reducing tensions that have come about from international issues but have had an impact locally. In particular the Hanbury Street Mural, tensions in the Middle East and more recently the political issues in Bangladesh.

Our success is evidenced through the boroughs annual residents' survey where the majority of residents (78%) feel that the local area is a place where people from different backgrounds get on well together. This is a growing trend and the highest in the past 5 years.

### **Preventing Violent Extremism Programme Board:**

We secured funding from the Home Office for five projects working with a wide range of local partners, including schools, tenants and residents associations and parents groups.

We developed and rolled out the 'Building Community Resilience' project, working with London Tigers and colleagues in Redbridge and Barking and Dagenham to engage and support young people to become resilient to extremism. The success of this project has been recognised by the Home Office and we have secured funding to extend the project into 2013/14.

We have seen a reduction of on-street recruitment by extremist organisations during the course of the year and an increase in community venues signing up to the No Place for Hate pledge and preventing such groups hiring venues in the borough. We have also delivered Prevent training to more than 60 staff this year and expecting to continue to deliver further training throughout 2013.

DRAFT

## Strategic Assessment 2012

The Strategic Assessment aims to fulfil the Partnership's statutory responsibility and identify key strategic priorities for the Partnership, which will then inform the Community Safety Plan.

The Strategic Assessment provides data driven evaluation of the current community safety issues in the Borough, possible developments over the next 3 years and recommendations for further action to address issues.

The partnership examined the context of current themes within community safety and took into account key national, regional and local priorities. In addition to these, it also included priorities for partner agencies over the coming years

The Strategic Assessment was developed based on close analysis of data against the CSP's 64 performance indicators (CSP Performance Dashboard), which are monitored at the CSP meetings under the nine existing headings below that reflect the CSP Sub-groups. The Partnership believed that these headings are the most efficient way to monitor data, and take into account the national, regional and local priorities. The nine headings are:

- Violent Crime (11 indicators)
- Property Crime (9 indicators)
- Youth Crime (6 indicators)
- Violence Against Women and Girls (10 indicators)
- Drugs and Alcohol (10 indicators)
- Integrated Offender Management (3 indicators)
- Anti-social Behaviour (ASB) (5 indicators)
- Cohesion and Hate Crime (6 indicators)
- Public Confidence (4 indicators)

The statutory partners provided information on the above indicators and they have been reviewed in the Strategic Assessment in terms of the following factors:

- Data and Analysis: 1<sup>st</sup> October 2011 – 30<sup>th</sup> September 2012
- Trends over the last 3 years (October 2009 – September 2012)
- Foreseeable developments in the next 3 years
- Recommendations

In addition to the information supplied by the statutory partners, additional information was provided by Victim Support and Tower Hamlets Council for Voluntary Services (on behalf of victims, witnesses and organisations working in the voluntary and community sector) and Registered Social Landlords.

**Please note: Due to the time scales and production schedule for the Community Safety Plan, we are unable to use full financial year figures to base the plan on. For an up to date position on the CSP's performance see Performance 2012/13 column overleaf**

## Performance from Strategic Assessment 2012

### 1<sup>st</sup> October 2011 – 30<sup>th</sup> September 2012

**Please note:** There are no Sanction Detection (SD) Rates available from 3 previous years, which prevents comparison with current rates.

\***Sanction Detections** can be defined as those where an offender has been charged, cautioned, reported for summons, reprimanded, the offence has been taken into consideration or where a fixed penalty notice has been issued in relation to a Notifiable Offence.

Violent Crime							
Performance Indicator	Lead Agency for Performance Indicator	Performance 2009/10 (Oct – Sept)	Performance 2010/11 (Oct – Sept)	Performance 2011/12 (Oct – Sept)	Performance 2012/13 (Apr – Mar)	Difference (+/-%) 2011/12 - 2010/11	Direction of Travel (Oct 2009 – Sept 2012)
Number of 'Most Serious Violence' offences	Police	401	456	354	345	-22%	11% Decrease
Most Serious Violence Sanction Detection (SD) Rate*	Police	-	-	142 (40%)	145 (42%)	-	-
Number of Gun Crimes	Police	74	60	57	48	-5%	23% Decrease
Gun Crime SD Rate*	Police	-	-	15 (26%)	20 (41%)	-	-
Number of Knife Crimes	Police	406	599	606	573	+1%	49% Increase
Knife Crime SD Rate*	Police	-	-	145 (24%)	134 (23%)	-	-
Assault with Injury	Police	1963	1732	1716	1860	-1%	13% Decrease
Number of DV Murders	Police	3	2	2	1	-	33% Decrease

**Property Crime**

<b>Performance Indicator</b>	<b>Lead Agency for performance indicator</b>	<b>Performance 2009/10 (Oct – Sept)</b>	<b>Performance 2010/11 (Oct – Sept)</b>	<b>Performance 2011/12 (Oct – Sept)</b>	<b>Performance 2012/13 (Apr – Mar)</b>	<b>Difference (+/-%) 2011/12 - 2010/11</b>	<b>Direction of Travel (Oct 2009 – Sept 2012)</b>
Number of Personal Robberies	Police	887	1307	1317	1357	+1%	48% Increase
Number of Commercial Robberies	Police	41	87	72	79	-19%	76% Increase
Total Robbery Numbers	Police	928	1396	1389	1436	-0.5%	50% Increase
Robbery SD Rate*	Police	-	-	180 (13%)	197 (14%)	-	-
Number of Residential Burglaries	Police	1014	1472	1388	1409	-6%	37% Increase
Residential Burglary SD Rate*	Police	-	-	132 (9.5%)	118 (8%)	-	-
Number of Thefts of Motor Vehicle	Police	854	858	845	846	-1.5%	1.1% Decrease
Number of Thefts From Motor Vehicle	Police	1730	2404	1716	1821	-28%	1% Decrease
Number of Theft of Pedal Cycle	Police	1448	1192	1517	1467	+27%	5% Increase

DRAFT

Youth Crime							
Performance Indicator	Lead Agency for performance indicator	Performance 2009/10 (Oct – Sept)	Performance 2010/11 (Oct – Sept)	Performance 2011/12 (Oct – Sept)	Performance 2012/13 (Apr – Mar)	Difference (+/-%) 2011/12 - 2010/11	Direction of Travel (Oct 2009 – Sept 2012)
Number of Serious Youth Violence offences	Police	234	297	217	212	-27%	7% Decrease
Number of young people entering the Youth Justice System for the first time	LBTH - YOT	241	229	-	169	-	2010/11 vs 2009/10 5% Decrease
Triage Restorative Intervention diverting 1 <sup>st</sup> time offenders from Youth Justice System:	LBTH - YOT	157	154	180	178	+17%	15% Increase
a) Referrals to pre-court intervention (Triage, Reprimand & Final Warning)		234	255	246	214	-3.5%	5% Increase
b) Satisfactory completion of intervention		96	118 (76.6%)	103 (57.2%)	Available Aug 2013	-13%	7% Increase
c) Satisfactory completion who go on to re-offend		14	19 (16.1%)	13 (12.6%)	Available Aug 2013	-31%	7% Decrease
d) Failed to complete intervention who go on to re-offend		20	4 (11.1%)	7 (24.1%)	Available Aug 2013	+75%	65% Decrease
% of custodial remands compared to 'all' remand decisions	LBTH - YOT	13.22%	21.56%	18.66%	15.5%	-3%	5% Increase
% of custodial sentences compared to all court disposals	LBTH - YOT	22 (4.35%)	40 (7.81%)	23 (5.57%)	7.1%	-2%	1% Increase
Proven re-offending by young offenders	LBTH - YOT	35.9%	35.8%	37.4% (9 months data)	40%	+2%	2% Increase

### Violence Against Women and Girls

Please note: Due to historic under reporting of violence against women and girls, significant work is being undertaken to increase both confidence in reporting and early reporting of these offences/crimes, to ensure that the actual levels of are established and more importantly, so that the victim/survivors receive partnership support at the earliest possible opportunity (see Priority D Violence (with a focus on Domestic Violence, page 44 for what action the partnership takes to address VAWG). Due to this work, we hope that this will have an impact (increase) on the number of reports of violence against women and girls, as seen below.

Performance Indicator	Lead Agency for performance indicator	Performance 2009/10 (Oct – Sept)	Performance 2010/11 (Oct – Sept)	Performance 2011/12 (Oct – Sept)	Performance 2012/13 (Apr – Mar)	Difference (+/-%) 2011/12 - 2010/11	Direction of Travel (Oct 2009 – Sept 2012)
Number of Domestic Violence offences	Police	1719	1682	1789	1993	+6%	4% Increase
Domestic Violence SD Rate*	Police	-	-	774 (43%)	953 (48%)	-	-
Domestic Offence Arrest Rate	Police	-	-	1483 (83%)	1664	-	-
Number of Rapes	Police	122	138	136	119	-1%	11% Increase
Rape SD Rate*	Police	-	-	28 (21%)	35 (22%)	-	-
Number of Other Serious Sexual offences	Police	289	271	269	257	-1%	7% Decrease
Other Serious Sexual Offences SD Rate*	Police	-	-	56 (21%)	56 (17%)	-	-
Reduce the length of time DV is experiences before it is reported to a specialist agency	LBTH	No Data	No data	3.63 years	3.63 years	-	-
Number of individuals referred to MARAC again within 12 months of original referral	LBTH	No Data	No data	59	52	-	-
% victim satisfaction rate of victims cases coming through the Specialist Domestic Violence Court	LBTH	No Data	No data	80% - 100%	90% - 100%	-	-



Drugs and Alcohol							
Performance Indicator	Lead Agency for performance indicator	Performance 2009/10 (Oct – Sept)	Performance 2010/11 (Oct – Sept)	Performance 2011/12 (Oct – Sept)	Performance 2012/13 (Apr – Mar)	Difference (+/-%) 2011/12 - 2010/11	Direction of Travel (Oct 2009 – Sept 2012)
Number of drug intervention programme referrals that re-offend	LBTH - DAAT	257	242	No data	No data	-	2010/11 vs 2009/10 6% Decrease
Number of drug users recorded as being in effective treatment	LBTH - DAAT	1616 (Nov 2009- Oct. 2010)	1636 (Nov 2010- Oct. 2011)	1573 (June 2011-May 2012)	1483 (Jan – Dec 2012)	-	3% Decrease
Number of drug users successfully completing treatment	LBTH - DAAT	Not measured by NDTs	137 (April 2011 – March 2012)	147 (April – Sept. 2012)	240	+7%	
Number of arrests made under 'Dealer a Day'	Police	420	382	415	397	+9%	1% Decrease
Number of prison release clients referred and commenced treatment	LBTH - DAAT	32%	42%	75%	129 / 174 74% (June 2012 – March 2013)	+33%	43% Increase
Number of DIP CJS clients completing treatment	LBTH - DAAT	No Data	No data	45 (April –Aug 2012)	403 (May 2012 – March 2013)	-	-
Number of DIP clients re-offending after completing treatment	LBTH - DAAT	No Data	No data	7 (April – Aug 2012)	88/269 (June 2012 – March 2013)	-	-
Number of clients engaging with DIP, captured and referred via targeted testing	LBTH - DAAT	No Data	No data	No data	1080 Tests 461 Positive (Aug 2012 – Mar 2013)	-	-

**Integrated Offender Management**

<b>Performance Indicator</b>	<b>Lead Agency for performance indicator</b>	<b>Performance 2009/10 (Oct – Sept)</b>	<b>Performance 2010/11 (Oct – Sept)</b>	<b>Performance 2011/12 (Oct – Sept)</b>	<b>Performance 2012/13 (Apr – Mar)</b>	<b>Difference (+/-%) 2011/12 - 2010/11</b>	<b>Direction of Travel (Oct 2009 – Sept 2012)</b>
Percentage of offenders under Probation supervision living in settled and suitable accommodation at the end of their order or license	Probation	No data	87.6% (Apr. 2011 – Mar. 2012)	86.7% (Apr. – Sept. 2012)	87.2%	-1%	-
Percentage of offenders under Probation supervision in employment at the end of their order or license	Probation	No data	55.7% (Apr. 2011 – Mar. 2012)	57% (Apr. – Mar. 2012)	52.6%	+1%	-
Adult re-offending rates for those under Probation supervision	Probation	9.76% (Mar. 2010)	8.96% (Mar. 2011)	9.1% (Sept. 2012)	-9.85 (July 2011 – June 2012)	+0.1%	0.6% Decrease

**DRAFT**

**Anti-Social Behaviour**

<b>Performance Indicator</b>	<b>Lead Agency for performance indicator</b>	<b>Performance 2009/10 (Oct – Sept)</b>	<b>Performance 2010/11 (Oct – Sept)</b>	<b>Performance 2011/12 (Oct – Sept)</b>	<b>Performance 2012/13 (Apr – Mar)</b>	<b>Difference (+/-%) 2011/12 - 2010/11</b>	<b>Direction of Travel (Oct 2009 – Sept 2012)</b>
Number of Police CAD calls for ASB	Police	No data	26,378	23,248	19,203	-11.9%	-
LBTH ASB Data	LBTH	3,619	3,260	3,128	2,803	-4%	13% Decrease
Number of Arson incidents (all deliberate fires)	London Fire Brigade	878	759	603	353	-21%	31% Decrease
Number of Primary fires in domestic buildings	London Fire Brigade	249	233	229	236	-2%	8% Decrease
Number of Primary fires in non-domestic buildings	London Fire Brigade	88	87	83	99	-5%	6% Decrease

### Cohesion and Hate Crime

Please note: Due to historic under reporting of hate crime, significant work is being undertaken to increase both confidence in reporting and early reporting of these offences/crimes, to ensure that the actual levels are established and more importantly, so that the victims receive partnership support at the earliest possible opportunity. The performance data below is in the format/categories provided by the police, unfortunately this does not disaggregate it into the 7 strands of hate crime (Disability; Race or Ethnic Identity; Religion/Belief; Gender or Gender Identity; Sexual Orientation; Age and Immigration Status or Nationality), which has historically only been recorded by the police as Race and Religious or Homophobic incidents/crimes (see Priority E Hate Crime and Cohesion, page 48 for what action the partnership takes to address Hate Crime and Cohesion). Due to this work, we hope that this will have an impact (increase) on the number of reports of all types of hate incidents/crimes, as seen below.

Performance Indicator	Lead Agency for performance indicator	Performance 2009/10 (Oct – Sept)	Performance 2010/11 (Oct – Sept)	Performance 2011/12 (Oct – Sept)	Performance 2012/13 (Apr – Mar)	Difference (+/-%) 2011/12 - 2010/11	Direction of Travel (Oct 2009 – Sept 2012)
Number of Racist and Religious offences	Police	350	378	345	364	-9%	1% Decrease
Racist and Religious SD Rate*	Police	-	-	146 (42%)	140 (42%)	-	-
Number of Homophobic offences	Police	66	82	71	53	-13%	8% Increase
Homophobic SD Rate*	Police	-	-	34 (48%)	29 (56%)	-	-
% of hate crime cases coming before the Hate Incidents Panel where formal action is taken	LBTH	100% 243 (Apr. 2009 – Mar. 2010)	100% 128 (Apr.2010 – Mar. 2011)	100% 143 (Apr.2011 – Mar. 2012)	100% 125 (Apr.2012 – Mar. 2013)	-	-
% of people who believe people from different backgrounds get on well together in their local area	LBTH	75% (Apr. 2009 – Mar. 2010)	76% (Apr. 2010 – Mar. 2011)	78% (Apr. 2011- Mar.12)	Awaiting Publishing of Annual Resident Survey	+2%	3% Increase

Public Confidence							
Performance Indicator	Lead Agency for performance indicator	Performance 2009/10 (Oct – Sept)	Performance 2010/11 (Oct – Sept)	Performance 2011/12 (Oct – Sept)	Performance 2012/13 (Apr – Mar)	Difference (+/-%) 2011/12 - 2010/11	Direction of Travel (Oct 2009 – Sept 2012)
% of people who feel that 'people being drunk or rowdy in public places' is a fairly/very big problem in their local area	LBTH	40% (Apr. 2009 – Mar. 2010)	40% (Apr. 2010 – Mar. 2011)	43% (Apr. 2011- Mar.12)	Awaiting Publishing of Annual Resident Survey	+3%	3% Increase
% of people who feel that 'vandalism, graffiti and criminal damage' is a fairly/very big problem in their local area	LBTH	42% (Apr. 2009 – Mar. 2010)	37% (Apr. 2010 – Mar. 2011)	41% (Apr. 2011- Mar.12)	Awaiting Publishing of Annual Resident Survey	+4%	1% Decrease
% of people who feel that 'people using or dealing drugs' is a fairly/very big problem in their local area	LBTH	51% (Apr. 2009 – Mar. 2010)	52% (Apr. 2010 – Mar. 2011)	53% (Apr. 2011- Mar.12)	Awaiting Publishing of Annual Resident Survey	+1%	2% Increase
% of people who feel that the 'Council and Police are dealing effectively with local concerns about anti-social behaviour and crime'	LBTH	48% (Apr. 2009 – Mar. 2010)	48% (Apr. 2010 – Mar. 2011)	50% (Apr. 2011- Mar.12)	Awaiting Publishing of Annual Resident Survey	+2%	2% Increase

## Public Consultation

As part of the partnership's duties to consult the community and the wider partnership on community safety in the borough, an extensive 5 week public consultation took place during May and June 2012.

The public consultation provided the public with the community safety priorities for 2012/13 and gave them the option to choose their top 3 from the list and or to supplement this with any other they deemed appropriate.

People were made aware of the consultation via press articles, letters and email alerts. They were given the opportunity to attend their local Police Safer Neighbourhood Team's Public Meeting, a Borough Public Meeting or a Members' Consultation Session (for elected members only). In addition they could reply in writing /email or respond via the dedicated webpage. This consultation asked members of the public (residents and business people), partnership and community groups/organisations for their top three community safety priorities.

In total 1,013 responses were received, the majority of which (862) were collected through the dedicated web page (Mytowerhamlets) and survey. This collection method also enabled us to monitor the equalities data of those 862 recipients against the Greater London Assembly's 2011 data, full findings of which are included in Public Consultation Report. In summary 65.71% of recipients identified their ethnicity as White (17 percentage point overrepresentation) and 20.36% as Bangladeshi (14 percentage point underrepresentation). In terms of Gender, 42% of respondents were female and 58% were male, which shows a 6.5 percentage point underrepresentation for female. With regards to age the largest group of respondents were those aged between 25 and 39 years of age, making up 50.2% (3.2% overrepresentation) of respondents and the smallest group being the 0 to 16 age group, making up only 5.1% (14.9% underrepresentation), however we cannot expect infants and minors to respond, so we cannot make meaningful statements about this. Those aged between 17 and 24 years made up 9% of respondents, which is an 11 percentage point underrepresentation.

### Results:

Based solely on the number of selections by members of the public in Tower Hamlets across all the different collection methods, the top 3 (4 in reality due to two priorities receiving the same number of responses) community safety priorities for the Community Safety Plan 2013-16 are:

1) Anti-social Behaviour (ASB)	298
2) Serious Acquisitive Crime	200
3) Drugs and Alcohol	196
- Violence	196
5) Youth Crime	175
6) Integrated Offender Management	130
7) Community Cohesion and Hate Crime	124
8) Public Confidence	104
9) Violence Against Women and Girls	88
10) Other	28

## **Priorities – How the Partnership Decided**

In December 2012, the Community Safety Partnership was presented with the Strategic Assessment 2012, an Executive Summary of the Strategic Assessment 2012, the Public Consultation Report and a paper which made recommendations based on their findings.

The recommendations took into account areas where trends were going in the wrong direction, areas which the partner agencies had highlighted as being priorities for all the partnership and existing priorities external to the partnership i.e. Home Office, MOPAC and Community Plan as well as the public's perception/priorities.

There are some areas of work which are priorities for individual and/or several partner agencies which the Community Safety Partnership has also taken into account when agreeing its own priorities for the term of this plan. The priorities that have not been deemed a priority by/for the Partnership will continue to remain priorities for those individual agencies and their performance will continue to be monitored and managed by each respective agency.

## **Priorities for 2013 -2016**

The Partnership recognises that it has a responsibility to address all areas of crime, disorder, anti-social behaviour, substance misuse and re-offending as part of its core business. However, it also recognises that there are a few particular areas, which have a greater impact on the people of Tower Hamlets and their quality of life. For this reason, it has agreed that it will place an added focus on these areas and they will form the priorities for the next 3 years.

- **Gangs and Serious Youth Violence**
- **Anti-Social Behaviour (including Arson)**
- **Drugs and Alcohol**
- **Violence (with focus on Domestic Violence)**
- **Hate Crime and Cohesion**
- **Public Confidence**
- **Reducing Re-offending**

DRAFT



## Priority A:

### Gangs and Serious Youth Violence

#### Why is it a priority?

Tower Hamlets has one of the highest proportions of young people as a percentage of its population compared to other boroughs both in London and nationally. Whilst Tower Hamlets does not have a significant gang problem compared to other London Boroughs, there are a small number of geographically based gangs in the borough, who sporadically come into conflict with each other. These gangs are responsible for a significant amount of the borough's youth crime and drug dealing. The effects that gangs and incidents of serious youth violence, although both uncommon, have on members' of the wider communities feeling of safety, especially other young people, makes this a priority for the Community Safety Partnership to address.

The borough saw a 27% reduction in the number of serious youth violence incidents and therefore victims for the period October 2011 – September 2012 when compared to the previous year. However, it is common to see increases and decreases, year on year as they can be skewed by unexpected events.

Young people aged 8 - 17, which form the Youth Offending Service's service users' age cohort, account for 10.4% of the Tower Hamlets population (27,280 residents<sup>[1]</sup>). This is above the proportion those aged 0 to 17 for Inner London which stands at 9.8% of the population, but below the figure for Greater London of 11%

This age group is projected to increase in size by 7.8% over the next 5 years<sup>[2]</sup> to reach 29,400 8 - 17 year olds by 2017. It is then projected to increase further over the following 5 years to reach 33,426 residents by 2022, which represents a 22.5% increase over the current 2012 number.

#### Responsible Board/CSP Sub-group:

Youth Offending Team Management Board  
Strategic Gangs Strategy Board  
Operational Gangs Partnership

#### What will we aim to achieve this year?

- Reduce the levels of ASB, Drugs, Homicide, Firearms discharges, Knife crime, and Serious Youth Violence
- Reduce First Time Entrants (FTE) to the youth justice system by early intervention
- Reduce the harm caused by street gangs across the borough

<sup>[1]</sup> ONS 2011 Census

<sup>[2]</sup> GLA SHLAA population projections – 2012 Round

- Reduce re-offending
- Reduce the use of custody, especially remands into custody
- Focus activity towards offenders who present most risk and harm to the community
- Support interventions to prevent young people from becoming involved in gang crime and serious youth violence
- Improve the numbers of young offenders in Education, Training and Employment
- With partners, offer practical assistance to individuals wishing to stop their involvement in gang criminality
- Engage young people on the periphery of gangs in positive activities
- Deliver sturdy enforcement of the law against those who persist with gang criminality, ASB, drugs, knife crime and youth violence
- Make best use of all available Criminal Justice opportunities to prevent and disrupt gang criminality and bring offenders before the courts
- Train magistrates in the work we are doing in respect of gangs
- Ensure there is process for the community to provide information and we can demonstrate it has been acted upon
- Run a violent offender group-work programme via the Youth Offending Service
- Become actively involved in the Safe and Secure Project

### **How will we measure success?**

- Number of Serious Youth Violence incidents
- Number of young people engaged with through the Police Gang Matrix
- Reduction in the number of First Time Entrants into the Criminal Justice System
- Number of young people from Police Gang Matrix:
  - Placed in Education, Training or Employment
  - Placed in suitable housing
- Re-offending Rates
- Performance Framework
- Police Public Attitude Survey
- Social Networks / Media Scanning
- Community Tension Reports
- Reducing Youth on Youth Violence and anti-social behaviour through Rapid Response team in identified Hotspot zone (identified by partners)

### **How will we do this?**

#### Youth Offending

- Identification and Priority Cohort – the key trigger for diversion and engagement targeted support and enforcement measures will be based on intelligence about young people shared between key partners and stakeholders.
- Young people (8-17 years) at risk of involvement in violent behaviour (including victims of SYV); those seeking a route out of violence and gang culture; and those being considered for enforcement measures due to refusing to exit violent lifestyles.
- Referrals will continue to come from schools to the Social Inclusion Panel and support will extend to siblings of the target cohort as well as children of adult offenders via the

Youth Inclusion Support Programme. The Youth Offending Prevention Service will build on its existing referral mechanisms for parents and self-referrals.

- We will also build on the Council's current arrangements for ASB enforcement measures and Gang Injunctions to ensure that young people have access to support services to prevent further escalation.
- Young people supported through diversion and engagement will be formally assessed using the Youth Justice Board's assessment framework. Assessments will aid the development of integrated action plans for each young person, determine and manage risks, taking into account safeguarding concerns.
- Interventions will be initiated via letter to both the young person and his/her guardian.
- Support available includes education, training, employment, accommodation (Police – Safe and Secure Initiative), substance misuse services, parental support, violent offenders/identity workshops, mentoring and positive activities, health and emotional wellbeing services and having a named key-worker.
- Early enforcement includes Behaviour Contracts (including exclusion zones and prohibitions), joint home visits and 'Buddi' monitoring tags.
- Civil enforcement includes Gang Injunctions, Parenting Orders, Anti-Social Behaviour Orders and Individual Support Orders.

#### Integrated Youth and Community Service

- The service will work in partnership with the police and respond to "Youth on Youth Violence" issues and engage them in to structured learning opportunities.

#### Troubled Families Programme

- The Troubled Families Programme will enhance the work of the Police and Youth Offending Team to broaden the offer of support and therapeutic intervention to the families of young people whose lives are affected by gangs. Outcomes are linked to the PBR element of the troubled families programme and focus primarily on reducing offending, increasing educational attendance and achievement and in getting young adults and their parents either into work or on the way to work.

#### Police

- The Police will use a range of activities in their approach to tackling Gangs and Serious Youth Violence. These will include activity analysis, weapons seizures, arrests, detections, search warrants, CHIS coverage and financial investigation.
- Produce Gang Related Intervention Profiles (GRIPs) on each individual which will include information on and from MATRIX analysis, reaching minimum threshold, intelligence coverage and whether they have been convicted in the past 6 months, charged in the past 3 months, under judicial restriction, named in proactive enquiry, a subject of financial investigation, engaging in a diversionary scheme and/or have no restrictions or current interventions in place.

## **What we will aim to achieve over the 3 years?**

Over the next 3 years we will:

- Aim to alter the public's perception and increase both confidence and satisfaction
- Increase the number of gang nominal's in custody by 20% of the 140 on the Matrix
- Increase the number of those exiting gang offending
- Focus enforcement work on those who reject the offer of intervention
- Increase the use of the family intervention: proportion of gang nominal's supported within a Family Intervention Project
- Increase the proportion of those supported into Education, Training and Employment
- Provide meaningful community engagement and full multi-agency collaboration and communication
- Through early intervention improve PRU and school truancy rates of those in the cohort
- Develop effective Accident & Emergency data sharing
- Provide enhanced offender management for gang members
- Maintain a fast response to critical incidents
- Develop shared ownership; strong leadership; information sharing; assessment and referral and targeted services
- To be able to identify what success is for key agencies, young people, families, government and for those involved in serious youth violence

## Priority B:

### Anti-Social Behaviour (including Arson)

#### Why is it a priority?

Anti-social behaviour (ASB) is both a National and Local priority. ASB can include behaviour such as noise, graffiti, abandoned cars and threatening behaviour which affects people's quality of life and can leave them feeling intimidated, angry or frightened. Tower Hamlets Community Safety Partnership works with all its partners to reduce levels of ASB so that residents and people, who work and visit the borough, maintain a good quality of life.

#### Responsible Board/CSP Sub-group:

Borough Crime Tasking Group  
Safer Communities Partnership Co-ordination Group

#### What will we aim to achieve this year?

- To better identify all incidents reported to partners in conjunction with Police data, to better identify all victims of ASB within the borough and provide a quality response to their needs.
- To reduce the number of anti-social behaviour incidents recorded on the Police CAD System by 10% based on end of year figures for 2011-2012. This equates to approximately 2356 calls less (**19176/16810**) for 2012-2013.
- Reduce the number of anti-social behaviour incidents reported to Registered Social Landlords
- Reduce the number of incidents of Vandalism

#### How will we measure success?

- Number of Police Computer Aided Despatch (CAD) calls for ASB\*\*
- Newly implemented (MPS) Airspace\* data
- LBTH ASB data
- RSL ASB (no. of ASB incidents reported) data
- Number of young people engaged by the Youth Inclusion and Support Programme
- Number of ASB referrals securing EET destination through Targeted Support Team.
- Reducing Youth on Youth Violence and anti-social behaviour through Rapid Response team in identified Hotspot zone (identified by partners)
- Reduction in calls

\*Airspace is a new IT based system that provides an enhanced method of identifying ASB that could not previously be identified and will enhance the Metropolitan Police's ability to resolve such identified problems

\*\* Using Metropolitan Police definition of Anti-social behaviour

- Improved Public Confidence and Victim Satisfaction
- Number of incidents of Criminal Damage
- Number of Arson incidents – All Deliberate Fires
- Number of Accidental Dwelling Fires
- Number of Primary Fires in Non-Domestic Buildings
- Number of incidents of Vandalism

### **How will we do this?**

- Increasing Police officer numbers to Neighbourhood Policing Teams through the implementation of the MPS Local Policing Model, combined with Partnership Funded officers and new methods of identifying individuals and areas. e.g. Airspace
- Regular meetings between Police, Fire Brigade, Council ASBand Integrated Youth & Community Service (especially Rapid Response Team) Teams together with key partners (including Housing Providers) to prioritise identified problems and tasking of resources committed to the reduction of anti-social behaviour
- Better identification of ASB through enhanced information sharing, improved data collection, recording and analysis
- Contact will be made with 100% of victims of ASB reported to the Police within 24 hours of initial call. Agreements will be made with victims to ensure quality service is provided to resolve their concerns and prevent on-going incidents
- All activity will be recorded on new systems to identify individual team performance
- Every cluster/ward team will be measured as to their success and levels of intervention
- Better use and co-ordination of civil tools and legislative powers available to landlords to tackle ASB in neighbourhoods
- More use of informal tools, such as agreements and undertakings available to landlords to prevent and tackle ASB
- Improved relationships between police, council workers and partners, such as housing providers through co-location will improve identification of ASB, joint working and case resolution
- RSLs will explore opportunities to work in partnership to prevent crime and anti-social behaviour in their neighbourhoods and utilise secure by design principles
- Engaging 60% of ASB referrals to Integrated Youth & Community Service into enrichment and Positive Activities.
- Engaging young people into Universal services in their locality.
- Maximise young people's participation during school holiday period through Integrated Youth and Community Services programme / initiatives.
- Increasing the number of Tower Hamlets Enforcement Officers in order to build on the successful enforcement and reassurance patrols to tackle ASB and other community concerns

### **What we will aim to achieve over the 3 years?**

- Through enhanced police and partnership activity we will seek a minimum 10% year on year reduction in the number of reported ASB
- We will identify ASB incidents initially reported as crime, ensuring ownership and commitment by their Safer Neighbourhood Team, so that all victims receive a quality service
- We will improve our standing from 2<sup>nd</sup> highest borough contributor of ASB in London to 5<sup>th</sup> highest or better
- Respond to new legislation and ensure any new powers for CSP agencies are utilised to prevent and respond to anti-social behaviour
- We will identify potential ASB perpetrators early, refer, develop a support/development plan and engage them onto positive activities through Targeted Youth Support Service
- Secure 90% of ASB referrals into EET destinations year on year
- Reduction in the Number of Incidents of Vandalism

## **Priority C:**

### **Drugs and Alcohol**

Please Note: Drugs and alcohol misuse is a known driver of property crime, by addressing this priority we expect this to have a positive impact on property crime in the borough.

#### **Why is it a priority?**

There is a clear link between dependent users of Class A Drugs (like heroin and crack cocaine) with burglary, robbery, theft from a person or vehicle (collectively known as Serious Acquisitive Crimes), fraud, shoplifting and prostitution, which they commit in order to fund the drug dependency.

The effects of alcohol on the body mean it is often more likely for the drinker to either be a victim or perpetrator of crime. Alcohol is often linked to both violence and anti-social behaviour. Its use is particularly linked to incidents of domestic abuse and violence.

Treatment for drug and alcohol users, particularly young people is important so that their health and well-being is safeguarded and they make a positive contribution to their local communities.

#### **Responsible Board/CSP Sub-group:**

Drug and Alcohol Action Team Board

#### **What will we aim to achieve this year?**

- Implement a multi-agency communications plan for service users and professionals which raises awareness of harm reduction & safe drinking levels; drug related harm & treatment services available; supports parents to address their child's drug and alcohol misuse
- Ensure school staff, pupils and parents receive substance misuse education
- Understand local trends in alcohol and drug consumption so that they inform the borough's Needs Assessment which in turn shapes service provision
- Report the number of young offenders screened and engaged by the YOT substance misuse worker
- Review and map prevention initiatives for both adults and children including referral and threshold criteria
- Strengthen primary care responses to substance misuse
- Increase the number of alcohol screenings in Police custody suites with referrals into treatment services
- Increase the number of drug users accessing targeted interventions who are identified via Police custody suite screening and widen the testing from Class A



- Improve the identification of and response to individuals presenting themselves to secondary care services including A&E
- Increase the number of 18-24 year olds referred and engaging in treatment for drug and alcohol problems
- Combat sales to underage drinkers including proxy sales including using young offenders as part of community reparation
- Disrupt the supply of drugs through effective enforcement
- Reduce the number of Property Crimes:
  - Reduce the number of Personal Robberies
  - Reduce the number of Residential Burglaries
  - Reduce the number of Thefts From Motor Vehicles
  - Reduce the number of Thefts of Motor Vehicles
  - Reduce the number of Thefts From a Person
- Reduce the number of incidents of Vandalism

### **How will we measure success?**

- Number of Drug Intervention Programme (DIP) referrals that re-offend
- Number of drug users recorded as being in effective treatment
- Number of drug users successfully completing treatment
- % of individuals in alcohol treatment, demonstrating abstinence or improvement in alcohol intake at 6 month review
- Dealer a day programme – Arrests made
- Number of prison release clients referred and commenced treatment
- Number of DIP Criminal Justice System clients completing treatment
- Number of DIP clients re-offending after completing treatment
- Number of clients engaging with DIP, captured and referred via targeted testing
- Number of young people taking drugs and/or alcohol, in specialist treatment
- Number of Personal Robberies
- Number of Residential Burglaries
- Number of Thefts From Motor Vehicles
- Number of Thefts of Motor Vehicles
- Number of Thefts From a Person
- Number of incidents of Vandalism

### **How will we do this?**

- Public Health working in partnership with Safer Communities and Children's Schools & Families Directorate to develop and implement the multi-agency communications plan will lead to a heightened awareness of services and referral mechanisms into those services.
- Provide training to schools, parents and peer educators on substance misuse education
- Conduct a Healthy Lifestyles Survey, analysis of GP drugs / alcohol data; hospital admissions; outreach data and treatment data to produce an annual Needs Assessment which will then inform and shape targeted provision.

- Holding mapping events for children's and adults services will enable us to identify all prevention initiatives and both their referral and threshold criteria.
- Deliver pilot sessions for invited services on the Behaviour Change Toolkit.
- The introduction of Alcohol Champions within the Royal London Hospital, having an Acute Trust alcohol strategy in place with buy in from a range of stakeholders and all wards and departments of secondary care having access to and implementing the guidance on 'the appropriate and effective management of alcohol dependent patients' and 'management of withdrawal from alcohol' will improve identification and response to individuals with alcohol problems.
- Implement targeted interventions for 18-24 year olds and ensure adult treatment providers offer an appropriate approach for them.
- Conduct underage alcohol sales operations which are supported by information and education for licensees on their legal obligations and follow up illegal sales with well-publicised prosecutions.
- Continue to deliver the 'Dealer a Day' operation which aims to arrest a drug dealer every day of the year.

### **What we will aim to achieve over the 3 years?**

- Review provision and configuration of drug and alcohol treatment for adults; including a redesign of treatment provision; facilitate a widespread consultation and an equalities impact assessment
- 20% reduction in total number of 'key crimes', as identified in the London Crime Reduction Plan which includes:
  - Robbery
  - Residential Burglary
  - Theft from Motor Vehicles
  - Theft of Motor Vehicles
  - Theft from a Person
  - Vandalism
  - Violence with Injury

## **Priority D:**

### **Violence (with a focus on Domestic Violence)**

#### **Why is it a priority?**

Violent crime is defined by the Home Office as robbery, sexual offences and violence against a person (ranging from assault without injury to homicide). While the number of incidences of Most Serious Violence (GBH and above) in the borough has shown a significant decrease over the last 12 months, it has been counteracted by a 51% increase in the number of reported domestic violence offences and a 3% increase in other non-domestic violent offences. This increase in violence could be attributed to increased confidence in reporting, where in the past the incident would have gone unreported.

Domestic violence has serious consequences affecting both adults and children with documented evidence showing that domestic violence is already endemic in a relationship before it is reported to the police for the first time.

Particular focus will be placed on Domestic Violence within this priority as well as all of the 8 other strands of Violence Against Women and Girls (VAWG) contained within the borough's VAWG Plan. The definition of domestic violence and abuse now explicitly includes 16 - 17 year olds and incorporates a wide range of abusive and controlling behaviours including physical, sexual, financial, emotional and psychological abuse, which contribute to the increase in violence across the borough. The cross-cutting nature of the Violence Against Women and Girls agenda means that responsibility for tackling these issues falls across a wide range of different agencies. Co-ordinating service provision and ensuring clear governance and accountability for this agenda is therefore a key challenge and a priority for the borough.

#### **Responsible Board/CSP Sub-group:**

Borough Crime Tasking Group  
Domestic Violence Forum

#### **What will we aim to achieve this year?**

- A reduction in the volume of non-domestic violence recorded Violence with injury compared with 2012/13 performance
- Achieving of Sanctioned Detection targets for the above crime types in terms of offences brought to justice
- Continued increase in the reporting of domestic abuse and sexual violence
- Developing partnership work across the borough to ensure that the Local Safeguarding Children Board's Safeguarding Policy is adhered to by all agencies

- Increase third party reporting by promoting the service and an increase in the number of sites
- Further development of an all-day DV One Stop Service
- Increase the number of DV perpetrators being referred to and accessing the IDAP Programme within the borough
- Run a violent offender group-work programme in the Youth Offending Team including an offensive weapon and joint enterprise session.
- Reduce the number of incidents of Violence with Injury
- Increased reporting of levels of sexual violence to the Haven, the Independent Sexual Violence Adviser and to East London Rape Crisis
- Increased identification of female genital mutilation (FGM) through health and community safety measures
- Increased identification of victims of trafficking or other forms of sexual exploitation

### **How will we measure success?**

- Number of Most Serious Violence offences per 1000 of the population
- Most Serious Sanction Detection (SD) Rate
- Number of Gun Crimes
- Gun Crime Sanction Detection (SD) Rate
- Number of Knife Crimes
- Knife Crime Sanction Detection (SD) Rate
- Number of Assaults with Injury
- Number of incidents of Violence with injury
- Number of DV Murders
- Number of Domestic Violence Offences
- Domestic Violence Sanction Detection (SD) Rate
- Domestic Offence Arrest Rate
- Number of Rapes
- Rape Sanction Detection (SD) Rate
- Number of Serious Sexual Offences
- Other Serious Sexual Offences Sanction Detection (SD) Rate
- Reduce the amount of time Domestic Violence is experienced before it is initially reported to a specialist agency
- Number of individuals to MARAC again within 12 months of original referral
- % victim satisfaction rate of victim's cases coming through the Specialist Domestic Violence Court
- Number of service users who attend the DV One Stop Shop, Homeless Persons Unit and Barkentine DV drop-in services
- Number of young women reported as missing from care or at risk of sexual exploitation to children's services
- Number of women identified as having undergone FGM
- Number of women (14 plus) who have presented to sexual violence services in the borough

## **How will we do this?**

- The Police will work to the 'action plans' for Violence with Injury and Domestic Violence which are designed to drive forward performance.
- The Council have recently recruited a Violence Against Women and Girls (VAWG) Strategy Manager (funded for 3 years) to develop the VAWG Plan across the 9 strands, working with services across the borough, to develop services and provide training on VAWG issues.
- Multi-agency support services developed to tackle all forms of VAWG including specific case management services to support women involved in prostitution.
- The Council will continue to develop partnership working with the Police, Health and the Voluntary Sector, to increase the reporting of domestic abuse by providing more reporting centres.

## **Domestic Violence and Hate Crime Team**

- Holding the Domestic Violence Forum
- Co-ordinating The Tower Hamlets Multi Agency Risk Assessment Conference (MARAC): attended by key officers from the Police, Homelessness Service, Children's Social Care, Health, Probation, Victim Support, specialist domestic and sexual violence services, Drug/ Alcohol Services, Mental Health and Education services which meets monthly to review and plan action in identified high risk cases.
- Co-ordinating the Tower Hamlets' Prostitution Partnership (THPP) meetings: interagency meetings to support sex workers including a MARAC style meeting
- DV1 inter-agency referral form and DV database
- Support Partnership DV One Stop Shop at the Jagonari Centre
- Hold DV Drop in Surgery at the Barkentine
- Homeless Person's Unit DV Drop in Surgery
- Survivors' Network
- Specialist Domestic Violence Court Steering Group Meeting
- Support and give information to staff by providing:
  - Telephone advice & information
  - Resources and guidance
  - Training
  - Working with health and VAWG agencies to develop an appropriate response to tackling FGM, so-called 'honour' based violence, forced marriage, trafficking and dowry abuse

## **What we will aim to achieve over the 3 years?**

- The Police will continue to work towards the MOPAC directive to achieve a 20% reduction in 'key crime' (Including Violence with Injury) by the end of 2015/16 performance year. The contribution to this performance through 2013/14 will be a 5%

Reduction in Violent Crime married with a 34% detection rate against the 2012/13 performance year.

- Reduce the length of time it takes individuals to report domestic abuse.
- Increase awareness of DV and increase their reporting of domestic abuse.
- Increased awareness of other forms of VAWG and increased reporting
- Increase training to service providers, so that all organisations are consistent in their approach to addressing issues of domestic abuse.
- Support organisations to increase their referrals to the MARAC, with a focus on 'high-risk' groups such as sex workers, those who are dependent on alcohol or drugs, carers and young people.
- Develop specialist health pathways for survivors of Female Genital Mutilation (FGM) and develop educational resources for schools as well as training for staff on how to respond in cases of FGM. Development of a multi-agency forum on FGM with public health, midwifery and the health trust
- Increase safety and health of street based sex workers as well as reducing associated ASB.
- Work with school staff, governors and parents to develop appropriate training resources to enable young people to increase their awareness of abuse and recognise when they are at risk in their own intimate relationships
- Work with young people to raise awareness around all forms of violence
- Support children's services to support young women (and men) that are at risk of sexual exploitation.

## **Priority E:**

### **Hate Crime and Cohesion**

#### **Why is it a priority?**

The Tower Hamlets Community Plan aims to make the borough a better place for everyone who lives and works here. The Borough's diversity is one of its greatest strengths with the richness, vibrancy and energy that our communities bring. As a partnership we are committed to build One Tower Hamlets, to tackle inequality, strengthen cohesion and build both community leadership and personal responsibility.

The borough is a diverse and tolerant place, where the vast majority of people treat each other with dignity and respect. Unfortunately there is a small minority of people who don't hold those same values and perpetuate hate. Hate crimes are committed on the grounds of prejudice against people who are different than the perpetrator in some way.

Preventing violent extremism and people becoming involved in it, is fundamental to achieving One Tower Hamlets. Our partnership approach has developed over the past five years and enabled us to tackle complex and contentious issues during that time.

#### **Responsible Board/CSP Sub-group:**

No Place For Hate Forum  
Community Cohesion Contingency Planning and Tension Monitoring Group

#### **What will we aim to achieve this year?**

##### Tower Hamlets No Place For Hate Forum

We know that for some people difference is a frightening thing. In difference, they see a threat and that is when prejudice takes hold. Sometimes prejudice results in the abuse and violence that undermines the borough's proud tradition of diversity and tolerance.

The experience of prejudice and hate isn't limited to one particular group. Hate crimes are committed against people of different races, faiths/beliefs, sexual orientations, gender identities, ages and disabilities and other actual or perceived difference. The Tower Hamlets No Place for Hate Forum (THNPFHF) and partners aim to stamp out all forms of hate, and ensure that the borough is a safe place for everyone.

- In 2013/14 we aim to increase the reporting of hate across all strands and raise awareness of the impacts of hate through education and awareness.
- We will aim to raise awareness of disability hate crime, utilising suitable methods to engage with the community to build confidence and increase reports

- THNPFHF partners will deliver various activities throughout the year that all contribute to making this borough proud and tolerant of its diversity.

#### Community Cohesion Contingency Planning and Tension Monitoring Group (CCCPTMG)

The Council established the CCCPTMG in 2007. Its role has been to provide a wide-ranging key individual network of those who represent statutory, voluntary and community organisations in Tower Hamlets. The ability to have a network of individuals prepared to respond in real time to critical incidents is a pivotal part of an effective emergency response. In 2013/14 we aim to:

- Plug gaps that we may have in the membership of the group in order to strengthen its impact in protecting local communities.
- Continue to respond to cohesion related issues in the borough in real time.
- Undertake one off seminars to look at specific threats to cohesion in order to both increase our learning of the threat and to identify what the boroughs response will be to reduce the threat.
- Undertake a piece of research on Islamophobia and how it impacts the local community.

#### Preventing Violent Extremism Programme Board

- Deliver phase two of Building Community Resilience project, engaging at least 70 young people in the borough in workshops to build their resilience to extremism
- 'Deliver the Connecting with the next generation' project to provide continuing professional development opportunities for teaching staff in madrasahs to develop their teaching skills and knowledge and understanding of the safeguarding agenda

#### **How will we measure success?**

- Number of Hate Crimes (overall and broken down into 7 strands of hate)
- Racist Sanction Detection (SD) Rate (overall and broken down into 7 strands of hate)
- % of hate crime cases coming to the Hate Incidents Panel where formal action is taken
- % of people who believe people from different backgrounds get on well together in their local area

#### **How will we do this?**

#### Tower Hamlets No Place For Hate Forum

- The Hate Incident Panel will continue to ensure that key agencies meet regularly to review and plan effective actions, share information effectively and swiftly to manage responses to hate incidents. Agencies including the Council, Police, Legal Services, Housing Associations, Victim Support and Youth Services will ensure that a co-ordinated and more structured response, gives out the message to offenders that we will not tolerate hate and they will be held accountable for their actions.



- The Hate Incident Panel will aim to increase the percentage of hate crime cases reviewed at the Panel, where formal action is taken (baseline to be set in March 2013).
- Free advice and guidance will be offered to non-council services (including Registered Social Landlords (RSLs)) will result in a more collective response to hate incidents across the borough.
- The Panel will continue to encourage RSLs to refer cases and access appropriate advice when investigating cases.
- The Panel will support the Police in achieving their targets for Racist Sanction Detection (SD) Rate and Homophobic Sanction Detection (SD) Rate.

#### Community Cohesion Contingency Planning and Tension Monitoring Group (CCCPTMG)

- The CCCPTMG will continue to meet on a 6 weekly basis with emergency meetings taking place if and when needed to discuss imminent threats to cohesion. The group will also look at increasing its membership to ensure that all sections of the community are being engaged with and are part of the discussion on cohesion related issues.

#### Preventing Violent Extremism Programme Board

- The preventing Violent Extremism Programme Board will continue to meet every quarter. In addition to this we also hope to set up an operations group for frontline managers in relevant services to engage with frontline staff in relation to the Preventing Violent Extremism agenda.

#### **What we will aim to achieve over the 3 years?**

##### Tower Hamlets No Place For Hate Forum

- We will maintain and further develop the Third Party Reporting Project, by delivering refresher training to existing centres and recruiting new significant sites with established links and trust within their community to become Third Party Reporting Centres. Currently the Reporting Centres reflect the hate crime strands and include Age Concern, Dellow Centre, Real (formerly Disability Information Training Opportunities), London Muslim Centre, New Start, Positive East, Praxis, Step Forward Tower Hamlets, Victim Support, One Stop Shops, City Gateway and Young People's One Stop Shop.
- In 2013/14 we aim to increase reports via the Third Party Reporting Centres by 13% compared to the current baseline of 80 Reports as of February 2013. Over the 3 years we aim to increase third part reporting by 36%.
- Tower Hamlets No Place For Hate Pledge – we will continue the campaign which promotes an established clear message to the community. The campaign will link to and support national and international campaign and local festivals, highlighting clearly that the partners will not tolerate hate in any form or nature in our diverse and cohesive borough, that is 'One Tower Hamlets'.

- The Forum will continue to promote the 'Pledge' at outreach events in the community whilst delivering workshops, at training and awareness stalls encouraging as many individuals and organisations to make a pledge against hate.
- The Forum aspires to increase the sign up of individuals and organisations to the pledge by 50% per year over the next three years when compared to the February 2013 baseline.

Community Cohesion Contingency Planning and Tension Monitoring Group (CCCPTMG)

- Maintain its role in monitoring local tensions and responding to threats to cohesion that may arise
- Aspires to ensure that we continue to increase, on an annual basis, the percentage of people who believe people from different backgrounds get on well together in their local area
- Tackle negative media perceptions that the borough attracts cohesion related issues and tensions.

Preventing Violent Extremism Programme Board

- Targeting social, peer and educational support and advice to individuals identified as at risk of involvement in extremist activity and violence
- Strengthening community leadership to enable key individuals and organisations to challenge/disrupt extremist ideology

## **Cross-Cutting Priorities**

When the Strategic Assessment and Public Consultation findings were presented to the Community Safety Partnership, they recognised that there were a number of areas of work that cut across other priority areas. Action taken to address the stand-alone priorities would be impacted by and impact upon these cross-cutting areas. For this reason the Community Safety Partnership agreed that this Plan would also contain the following two cross-cutting priorities:

**Public Confidence**

**Reducing Re-offending**

DRAFT

## **Cross-Cutting Priority 1:**

### **Public Confidence**

#### **Why is it a priority?**

Public Confidence is a Government priority and a measurement of the level of Confidence in Policing and the wider partnership. Reducing the community's fear of crime is therefore a priority as how we deal with crime, disorder and anti-social behaviour impacts on the community's well-being, feeling confident to report incidents and support future investigations and prosecutions.

The perception of, and fear of both crime and ASB directly impacts on public confidence. Being a victim of or knowing a victim of a Serious Acquisitive Crime (robbery, burglary, car crime and theft), has a particular impact on public confidence and can generate negative perceptions of both agencies and particular geographical areas or estates in the borough.

#### **Responsible Board/CSP Sub-group:**

Confidence and Satisfaction Board

#### **What will we aim to achieve this year?**

- Ensure that residents and people who work in or visit the borough, have a realistic understanding of the levels of crime and disorder within the borough, so that their fear does not become disproportionate
- Encourage people to take reasonable steps to protect themselves, their neighbours and their property
- Ensure that people continue to report crime, disorder and anti-social behaviour to the relevant agencies and that they are confident their issues will be dealt with
- Reduce the level of reported ASB and Crime, including Serious Acquisitive Crime, which are known drivers of public confidence
- Improve the public's perception of police by 20% and improve satisfaction with the policing service provided

#### **How will we measure success?**

- % of residents who feel the local Council and Police deal effectively with local concerns about anti-social behaviour and crime
- Perceptions of Crime and ASB as measured by MPS and Council data reduced based on 2012/13 end of year performance data.
  - Local concern about ASB and Crime a) Drunk and rowdy behaviour in a public place

- Local concern about ASB and Crime b) Vandalism and Graffiti
- Local concern about ASB and Crime c) Drug use or drug dealing as a problem
- Local council and police are dealing effectively with local concerns about anti-social behaviour and crime
- Year on year improvement in published performance data relating to Confidence and Satisfaction measures
- Number of Property Crimes:
  - Number of Personal Robberies
  - Number of Residential Burglaries
  - Number of Thefts From Motor Vehicles
  - Number of Thefts of Motor Vehicles
  - Number of Thefts From a Person
- Number of incidents of Vandalism

### **How will we do this?**

- Continue and improve partnership working to provide a quality response to all victim needs and identified crime trends.
- Respond to every victim's call for help by responding in a timely fashion while delivering a quality service.
- Contact every victim of ASB to establish how we can support them better, to improve theirs and their community's quality of life.
- Contacts a range of victims of crime to identify the level of service delivered and identify opportunities to improve service delivery.
- Restructure local policing by moving detectives into front line policing, so we improve primary investigation of reported crime.
- Reduce the Number of Personal Robberies
- Reduce the Number of Residential Burglaries
- Reduce the Number of Thefts From Motor Vehicles
- Reduce the Number of Thefts of Motor Vehicles
- Reduce the Number of Thefts From a Person
- Reduce the number of incidents of Vandalism

### **What we will aim to achieve over the 3 years?**

- 20% Increase in Public Confidence
- Reduce the Volume of Reported Crime and ASB each year from a baseline measured on 2012/13 financial year.
- Improve our Confidence and Satisfaction Performance data by 2 percentage points per year based on 2012/13 financial year.
- Through better contact with victims, we will improve victim care and increase our Public Confidence and Satisfaction performance that will contribute together with other activity to show Tower Hamlets as the 'best in class' within inner London.
- 20% total reduction in Property Crime and MOPAC's 'key crimes' as a group:
  - Reduction in the Number of Personal Robberies
  - Reduction in the Number of Residential Burglaries
  - Reduction in the Number of Thefts From Motor Vehicles
  - Reduction in the Number of Thefts of Motor Vehicles

- Reduction in the Number of Thefts From a Person
- Reduction in the Number of incidents of Vandalism

## **Cross-Cutting Priority 2:**

### **Reducing Re-offending**

Please Note: Reducing the re-offending of prolific offenders will have a positive impact primarily on the level of property crime in the borough.

#### **Why is it a priority?**

Partners in Tower Hamlets are committed to working together to reduce crime and disorder, and tackling deprivation, worklessness and social exclusion. We know that 50% of all crime is committed by people who have already been through the criminal justice system – re-conviction rates for some offenders can reach over 70%.

In Tower Hamlets, like most boroughs there are a relatively small number of people who carry out the majority of criminal acts. By targeting resources at these prolific offenders, to improve the level of support provided for those who wish to change their lives in a positive way and fast-tracking the prosecution process for those who refuse to change, we aim to reduce the number of prolific offenders in the borough and make it a safer environment for everyone.

By reducing the number of prolific offenders in the borough, we will directly impact the levels of crime and anti-social behaviour which will particularly lead to a reduction in Serious Acquisitive Crime (Personal Robbery, Residential Burglary, Theft from Motor Vehicle, Theft of Motor Vehicle and Theft from a Person).

#### **Responsible Board/CSP Sub-group:**

Integrated Offender Management Board  
Youth Offending Team Management Board

#### **What will we aim to achieve this year?**

- Develop our joint understanding and commitment to Integrated Offender Management and review our Reducing Reoffending Strategy
- Reduce the level of recorded crime within the borough
- Reduce the Number of Personal Robberies
- Reduce the Number of Residential Burglaries
- Reduce the Number of Thefts From Motor Vehicles
- Reduce the Number of Thefts of Motor Vehicles
- Reduce the Number of Thefts From a Person
- Reduce the Number of incidents of Violence with Injury
- Reduce the Number of incidents of Vandalism
- Reduce the number of first time offenders entering the criminal justice system
- Reduce the re-offending rate of Prolific offenders

- Reduce the re-offending of young people leaving custody
- Engage more closely with and support identified criminals to encourage them to desist from their criminal lifestyle
- Provide targeted treatment and support for identified offenders, i.e. housing, benefits and treatment

### **How will we measure success?**

- Number of Youths not entering Criminal Justice System through Triage
- Proven reduced re-offending by offenders supported by Youth Offending Service
- Number of Offenders being supported by key agencies to help them disengage from criminal lifestyle
- Number of Priority Prolific Offenders engaging with the PPO Scheme who no longer have criminal offences recorded against them
- Number of Offenders under Probation supervision, living in settled and suitable accommodation at the end of their order/licence.
- Number of Offenders under Probation supervision in employment at the end of their order/licence
- Adult re-offending rates for those under Probation supervision
- Percentage of offenders under Probation supervision living in settled and suitable accommodation at the end of their order or license
- Percentage of offenders under Probation supervision in employment at the end of their order or license
- Number of Personal Robberies
- Number of Residential Burglaries
- Number of Thefts From Motor Vehicles
- Number of Thefts of Motor Vehicles
- Number of Thefts From a Person
- Number of incidents of Vandalism
- Number of young people leaving custody who go on to re-offend

### **How will we do this?**

- Better identify youths who are suitable for non-Criminal Justice outcomes by improved triage processes and introduce conditional cautioning as a disposal option.
- Improve drug testing activity in Police custody, to identify potential offenders and provide support / treatment
- Improve partnership engagement to better identify third sector agencies that can support identified offenders who require help to escape their life of crime.
- Secure increased funding and resources aimed at offenders in the community to reduce/cease re-offending
- Enhance our daily contact with named individuals through the Integrated Offender Management Team (Police, Probation and Drug Intervention Project), to ensure their on-going commitment to a non-criminal lifestyle

### **What we will aim to achieve over the 3 years?**

- Increase the level of engagement (through IOM Board) provided by partner agencies and Third sector, to help identified individuals escape their criminal lifestyle
- Identify the number of offenders entering custody who have a drug habit, through targeted drug testing and providing appropriate support mechanisms and referrals
- Reduce the number of Youths entering the Criminal Justice System by providing alternative disposal options (CJB Data)
- Reduce the number of Adult Prolific and Priority Offenders (PPO) who commit crime, aiming at a 10% reduction each year from the 2012/13 baseline
- Show reduction in recorded crime for identified / supported offenders
- 20% reduction in MOPAC's 'key crimes' including Property Crime, as identified in the London Crime Reduction Plan:
  - Robbery
  - Residential Burglary
  - Theft from Motor Vehicles
  - Theft of Motor Vehicles
  - Theft from a Person
  - Violence with Injury
  - Incidents of Vandalism
  - Re-offending of young people leaving custody



## APPENDIX 2 - Community Safety Plan - Public Consultation Report

### Executive Summary

The Tower Hamlets Community Safety Partnership, via the Community Safety Team in LBTH conducted an extensive public consultation over 5 weeks from May to June 2012, in line with the Community Safety Plan 2013 Consultation and Development Plan, the timetable of which can be found in Appendix 3.

Consultees were contacted via press articles, letters and email alerts. They were given the opportunity to attend their local SNT Public Meeting, a borough wide Public Meeting or a Members' Consultation Session (if they were an elected member), to reply in writing /email or via the dedicated webpage. This consultation asked members of the public (residents and business people), partnership and community groups/organisations for their top three community safety priorities.

In total 1,013 responses were received which have been grouped by how they were collected (due to recording issues with web-based consultation). Those groups are Public Meetings Results and Web-based Results.

#### Public Meetings Top 3:

1)	Drugs and Alcohol	94
2)	Anti-Social Behaviour (ASB)	89
3)	Youth Crime	55

#### Web-based Top 2 Crime Priorities:

1)	Serious Acquisitive Crime	147
2)	Violence	146
3)	Youth Crime	120

#### Web-based Top 2 Crime Themes:

1)	Anti-Social Behaviour (ASB)	209
2)	Reducing Re-offending	121
3)	Community Cohesion and Hate Crime	113

#### Results in Total:

Based solely on the number of selections by members of the public in Tower Hamlets across all the different collection methods, the top 3 (highlighted in yellow below) community safety priorities for the Community Safety Plan 2013 are:

1)	Anti-social Behaviour (ASB)	298
2)	Serious Acquisitive Crime	200
3)	Drugs and Alcohol	196
-	Violence	196
5)	Youth Crime	175
6)	Integrated Offender Management	130
7)	Community Cohesion and Hate Crime	124
8)	Public Confidence	104
9)	Violence Against Women and Girls	88
10)	Other	28

### **Consultation Objectives**

- To obtain views on the current levels of crime, disorder, substance misuse and re-offending rates within Tower Hamlets.
- To identify community safety priorities from members of the community, partner agencies (including the 3<sup>rd</sup> sector) and the Community Safety Partnership (Safe and Cohesive CDPG) for 2013 onwards\*.
- To include analysis of these perceptions on levels of crime, disorder, substance misuse and re-offending rates and subsequent priorities will then be included in the 2012 Community Safety Partnership's Strategic Review. This will then be used to shape the Community Safety Plan 2013 onwards\* before entering into formal approval mechanisms.

### **Key Messages**

- Community safety is one of the Mayor's five priorities
- Community safety and cohesion are a priority for the Partnership.
- The 2012 Community Safety Partnership Plan Priorities
- This consultation is their opportunity to shape crime, disorder and cohesion priorities for 2013 onwards.
- Take part in the consultation to help make Tower Hamlets a safer place

### **Target Audiences**

- Residents
- Members
- Businesses
- Partners (inc. Police/NHS/THH/Third Sector)
- Young people
- Support/Advice agencies
- Hostels
- Media

### **Methods:**

#### **Community Safety Partnership (Safe and Cohesive CPDG)**

Key senior officers from the Community Safety Partnership (Police, Council, Probation, Fire Service and Health) set up a Strategy Development Group to ensure that the Community Safety Plan was produced and have been heavily involved in both the design and the content of the Strategic Assessment and the Community Safety Plan from the outset.

The Strategic Assessment 2011, draft Community Safety Plan 2012/13 and this Consultation Plan were presented to the Community Safety Partnership on 18<sup>th</sup> October 2011, where the Assessment and Consultation Plans were approved and the draft Plan was signed off pending feedback from the Consultation.

\* The length of the Community Safety Plan is determined at a local level by Statutory Authorities within the Community Safety Partnership and can cover either 1, 3 or 5 years.

## **Press Release**

In May 2012 a press release was issued launching the public consultation. Within the release were quotes from the Co-Chair of the Safe and Cohesive Community Plan Delivery Group (Borough Commander) and the Mayor of Tower Hamlets, Lutfur Rahman.

## **Letters**

In May 2012, 481 letters were sent out on behalf of the chairs of the CSP. Each letter included the 2012/13 Plan's priorities, asked for their top 3 borough priorities and feedback either by letter or through the consultation webpage (mytowerhamlets) were sent, to the following:

- Residents (identified through previous consultation exercises)
- Residents Groups including TRA's, Ward Panels and Neighbourhood Watch
- Subgroups of the Community Safety Partnership (Safe & Cohesive CPDG):
- Drug and Alcohol Action Team Board
- Youth Offending Team Management Board
- Safeguarding Boards (Adults and Children)
- Integrated Offender Management Board
- Equality and Cohesion Board
- Violence Against Women and Girls Board
- Confidence and Satisfaction Board (Police Board)
- Borough Criminal Justice Group

By contacting the above boards/subgroups, we consulted the agencies below, who are all members of them:

- Tower Hamlets Housing Forum (all Registered Social Landlords invited)
- British Transport Police
- NHS
- Voluntary Sector
- Faith Organisations
- Community Groups
- Canary Wharf Group
- Hostels
- Victims via Victim Support
- One Tower Hamlets
- Support Groups
- Transport For London
- Jobcentre Plus
- Veolia Environmental Services
- Disability groups
- Schools and Youth Centres
- Older peoples' centres

## **Members Briefing**

An article publicising the Police public meetings appeared in weekly Members' Briefing. The Police public meetings were the face to face consultation method for the partnership on the priorities, which gave local police and representatives from the council the opportunity to explain the current priorities (both local and borough-wide) to residents in the context of the current performance. These events were Police lead due to them taking place during a by-election and London Mayor election period.

## **Consultation Events:**

**Police and Community Safety Board – Executive on 18<sup>th</sup> July**, were given a presentation of CSP Plan Development Schedule, and the options for 2013 onwards community safety priorities. This is the first time that the executive board has been asked to give their comments on the priorities before the plan has been written, as in the past they have been consulted on the draft Plan. They were asked for their opinion on the current levels and asked for their priorities for the next Plan period (likely to be 1, 3 or 5 years) based on the 2012-13 Plan's Priorities. Most of the members had already given their personal priorities via the public consultation. The board discussed the mechanisms for the Plan's delivery, development and strategic review of performance.

**Borough Café Connect event** took place on Thursday 21<sup>st</sup> June in Shadwell. This featured presentations from the Deputy Mayor for Community Safety and the Borough Commander, both Co-chairs of the Community Safety Partnership. Residents from across the borough were presented with the current community safety priorities, the current levels of crime and disorder. They then took part in a table top discussion exercise on each community safety priority which focussed their thoughts on tackling them in partnership (residents and agencies). This exercise enabled them to make informed decisions on their top 3 priorities for the 2013 Plan. The event was attended by 33 residents which also reflected the social makeup of the borough.

**Community Safety Road-shows - 26<sup>th</sup> April until 14<sup>th</sup> June**. These were hosted by the Police Safer Neighbourhood Teams on a local basis, with support from LBTH Community Safety officers regarding the CSP Priority Consultation session. It gave the Partnership an opportunity to inform residents on the CSP Plan 2012/13 priorities and the current levels of crime, disorder/anti-social behaviour, substance misuse and re-offending rates. The residents were able to comment on these levels and make informed recommendations for the borough's top priorities 2013 onwards. The Road shows' ultimate aim was to give residents the opportunity to set their local Public Set Priorities and identify ways to tackle them.

In total there were 12 Police Public Meetings with attendance ranging from 7 to 23 residents. The overall attendance was 114.

**Members Consultation Event – Wednesday 1<sup>st</sup> August**. This enabled the elected members to contribute their own top three community safety priorities for the borough, prior to the production of the Strategic Review. In the past members have been consulted through the committee approval process once the report has already been approved by the Community Safety Partnership and then the formal council process. 6

elected members attended the event, 4 staying from start to finish and a further 2 who had to attend other council meetings. Of those 6, 4 completed the 'Top 3 Survey'

### **Website**

A dedicated consultation page on Tower Hamlets Council's webpage was operational during the 5 week consultation period. The mytowerhamlets webpage facilitated this element of the public consultation and the benefit of this system is that it is the borough's consultation and communication tool. The Mytowerhamlets system also sent out alerts requesting responses from all members of the community who have already registered for a mytowerhamlets consultation.

The public consultation ended on Friday 22<sup>nd</sup> June. In total there were 862 respondents to the mytowerhamlets web-survey.

### **Media**

Consultation launch article in East End Life and media/press release, asking community to take part in consultation and reminder to appear week prior to consultation ends.

### **\*\*Key notes to consider when analysing the public consultation:**

The public consultation set out to inform the public of the 2012/13 borough community safety priorities. In all correspondence, meetings and events the public and partners were asked to choose their top 3 priorities from the list of current priorities or if not present to state other and give further details.

A significant flaw became apparent during the set-up of the mytowerhamlets page, that webpage design would not allow us to ask the question of their top 3 priorities in such a simplistic manner. The solution was to break the question up into two, this would be to identify their Top 2 Crime Priorities from (Violence, Serious Acquisitive Crime, Youth Crime, Violence Against Women and Girls, Drugs and Alcohol and/or Other). They were then asked to identify their Top 2 Crime Themes from (Reducing Re-offending, Antisocial Behaviour, Community Cohesion, Public Confidence and/or Other).

While those who attended a public meeting and gave their top 3 priorities had the opportunity to ask questions about each option and were also given information on the current local and borough levels of crime and disorder, those who were directed to mytowerhamlets web survey were not able to discuss the priorities further with so-called experts to enable them to make a truly informed decision on their top 3 (or top 4 as it turned out).

Also worth pointing out before we look at the actual results, is that due to the mytowerhamlets survey splitting the list of priorities into two questions, with each answer option presented in a series of pages, it did not allow the respondent to see all the options in full view and then make a decision weighing up all their options. With this in mind, we will look at the findings from the two different collection methods separately:

- 1) Public Meetings (Police Public Meetings, Cafe Connect Event and Elected Members Consultation Meeting)
- 2) Webpage Based Survey (mytowerhamlets)

## Results

### **Public Meetings**

Public meetings took place locally in the borough from 24<sup>th</sup> April to 14<sup>th</sup> June, in 12 areas which mirrored the areas managed by Police Safer Neighbourhood Sergeants. Tower Hamlets has 17 co-terminus electoral wards and Police Safer Neighbourhood Teams, however following a review of police SNT staffing structure, some SNTs share a Police Sergeant. Therefore it made sense given that the sergeant was running the police public meetings, that they should only host one covering their SNT/s area. In total 114 people at these events completed the top 3 priority survey.

A borough-wide consultation event took place on Thursday 21<sup>st</sup> June. This was hosted by the 2 co-chairs of the Community Safety Partnership. Residents and representatives from the Voluntary/Third Sector were all invited to take part. In total 33 people at these events completed the top 3 priority survey.

In total 147 people attended during the course of 13 events. Each person was asked to mark their top 3 priorities from the current priorities on the paper survey and if they chose 'Other', they were asked to specify what that other priority was.

The results from the Police led Public Meetings are:

(1)	Drugs and Alcohol Abuse	80
(2)	Anti-social Behaviour	78
(3)	Serious Acquisitive Crime	47
(4)	Violence	39
(5)	Youth Crime	36
(6)	Public Confidence	26
(7)	Violence Against Women and Girls	15
(8)	Community Cohesion and Hate Crime	7
- Other	7	
(10)	Integrated Offender Management	6

Respondents who chose 'other' listed the following:

More supervised play areas for school children  
Crime and the Elderly (2)  
Reassure vulnerable older people  
Terrorism  
Gangs  
Hate Crime  
Domestic Violence  
Need an Older Peoples' Champion / Mayor / Ambassador

## Borough Café Connect Event

This consultation event was held from 6pm – 8.30pm on Wednesday 21<sup>st</sup> June in the Tarling East Community Centre was part of the broader consultation programme. This event was hosted by the Co-Chairs of the Community Safety Partnership (Chief Superintendent Dave Stringer, Borough Commander and Deputy Mayor Cllr Ohid Ahmed) and included presentations on levels of crime and disorder, recent achievements and current priorities.

The two main parts of event concerning the consultation were a table based discussion on each of the current crime and disorder priorities, which aimed at thought provoking on challenges and opportunities for the Community Safety Partnership in the coming years and finally to obtain their top three borough community safety priorities.

33 members of the public, including local youth club members, Neighbourhood Watch co-ordinators, probation workers in the local community, students from the local university and residents attended the event. Each took part in the table top discussions and submitted their top 3 priorities. The feedback from the table top exercise is attached in Appendix 2.

### Top 3 Priorities (Results):

1)	Youth Crime	16
2)	Drugs and Alcohol	10
3)	Violence	10
4)	Anti-Social Behaviour	9
5)	Violence Against Women and Girls	8
6)	Serious Acquisitive Crime	6
7)	Public Confidence	6
8)	Community Cohesion and Hate Crime	4
9)	Integrated Offender Management	3
10)	Other	1

## Members Consultation

A Members Consultation Event took place on Wednesday 1<sup>st</sup> August. This enabled the elected members to contribute their own top three community safety priorities for the borough, prior to the production of the Strategic Review. 6 elected members attended the event, 4 staying from start to finish and a further 2 who had to attend other council meetings. Of those 6 members, all gave specific issues affecting their ward, but only 4 completed the 'Top 3 Survey'.

The results from the members' completed surveys are:

(1)	Drugs and Alcohol	4
(2)	Youth Crime	3
(3)	Anti-Social Behaviour	2
(4)	Violence	1
-	Violence Against Women and Girls	1
-	Public Confidence	1

## Web based Consultation

Over the 6 week consultation period, 862 people responded to the web based consultation, responding to the two separate questions as follows:

### Top 2 Crime Priorities

(1)	Serious Acquisitive Crime	147
(2)	Violence	146
(3)	Youth Crime	120
(4)	Drugs and Alcohol	102
(5)	Violence Against Women and Girls	64
(6)	Other	12

People who chose 'Other' and detailed their other priority stated the following:

- Any form of theft
- Anti-social
- Petty crime carried out by companies like builders and shoddy work but still charging
- Loitering in car parks day and night drinking, taking drugs and selling them
- Government cuts in police services and cuts to youth and pensioner services due to legislation
- Complaint about survey not working
- Drug dealing
- Anti-social behaviour
- Social exclusion and isolation
- N/A
- Violence is top priority and this should include terrorism which must be at the top given our location between the Tower of London and Canary Wharf



## Top 2 Crime Themes

(1)	Anti-social Behaviour	209
(2)	Reducing Re-offending	121
(3)	Community Cohesion and Hate Crime	113
(4)	Public Confidence	71
(5)	Other	8

People who chose 'Other' and detailed their other priority stated the following:

- Littering of school children and parents outside my house and in the car park
- Safer streets
- Police, Youth and Drug Service cuts as a result of the new government legislation
- Your survey is useless all of these things are important to us!
- Prevent drug dealing in estates
- Crimes against women and serious acquisitive crime....as before
- More Police
- Reducing exclusion from society with ethnic minorities in particular through better education and involvement of women in such groups and their greater involvement in the community, greater promotion of social cohesion by ensuring the promotion of common language, English, to ensure all communities, both male and female, can communication among one another.

**\*\*\*Please note:** due to the design of the online survey, people were still presented with the opportunity to list their other choice, even if they had not chosen the 'Other' option/answer. 116 people chose to submit an answer to 'Other' even though they had already chosen their top two priorities in each question. Whilst technically these can be included in the responses/findings of the survey they cannot be included in the official results as some people therefore had chosen their priorities twice.

Additional comments under 'Other' tend to reflect the top priorities, although they refer to specific types of issues within those broad offence/crime themes/types ie. Youths causing ASB, which is a sub category of Anti-Social Behaviour; bicycle theft which is a sub category of Acquisitive Crime.

## Equalities Analysis of Respondents

Of the 862 people who responded electronically on the Mytowerhamlets survey, 238 completed it correctly, 56 filled out the survey incorrectly (more or less than the requested two responses per question) and a further 568 gave no responses to the questions (did not select other as their answer but then completed the other section). This makes it difficult to analyse the overall 862 respondents for their answers, so the following analysis is based on those 294 who completed the survey correctly/incorrectly who gave responses.

### Ethnicity

Ethnicity	Respondents	% of survey	Ethnic group proportions taken from GLA 2011 PP
White	184	65.71%	48.8%
Bangladeshi	57	20.36%	34.3%
Black Caribbean/African	11	3.93%	6.1%
Indian	11	3.93%	2.1%
Other	17	6.07%	8.8%
Did not specify	14	4.76%	
<b>Total respondents</b>	<b>294</b>		

White - overrepresented in the survey sample by 17 percentage points

Bangladeshi - underrepresented in the survey sample by 14 percentage points

Black Caribbean/African - underrepresented in the survey sample by 2 percentage points

Indian - overrepresented in the survey sample by 2 percentage points

Other' ethnic groups - underrepresented in the survey sample by 3 percentage points

Compared to ethnicity figures from the Greater London Assembly, White people were overrepresented in responding to the survey, all other ethnic groupings except Indian were underrepresented.

## Gender

Gender	Respondents	% of survey	Census 2011
Female	111	42.0%	48.5%
Male	153	58.0%	51.5%
<b>Total respondents</b>	<b>264</b>	<b>100.0%</b>	<b>100.0%</b>

Males slightly overrepresented in the survey sample by 6.5 percentage points

## Sexual Orientation

Sexual orientation	Respondents	%
Heterosexual	191	65.0%
Prefer not to say / Blank	80	27.2%
LGBT	23	7.8%
<b>Grand Total</b>	<b>294</b>	<b>100%</b>

No reliable comparator information for the borough as a whole and so we cannot talk about representation, though 7.8% is consistent with some estimates that range from 4 to 9% of residents

## Disability

Disability	Respondents	% of survey
No	233	79.3%
Yes	17	5.8%
Prefer not to say / Blank	44	15.0%

No reliable comparator information for the borough as a whole and depends on definitions of a disability, so we cannot really talk about representation

<b>Grand Total</b>	<b>294</b>	<b>100%</b>
--------------------	------------	-------------

Age

Age	Respondents	%	Census 2011	percentage point difference
Did not specify	2	0.7%		
0 - 16	15	5.1%	20.7%	-15.6%
17 - 24	25	9.0%	20%	-11.0%
25 - 39	139	50.2%	47%	3.2%
40 - 49	53	19.1%	14%	5.5%
50 - 59	40	14.4%	9%	5.7%
60+*	20	7.2%	10.6%	-3.4%
<b>Grand Total</b>	<b>277</b>	<b>100%</b>		

0-16's underrepresented compared to number in borough population, however we can't expect infants and minors to be responding and so cannot make any meaningful statements about this

**For the following part of the table '0-16's have been excluded from the sample %, and population % to get around the issue**

underrepresented  
over represented  
over represented  
over represented  
underrepresented

\* aggregated due to small numbers

## Ward

<b>Ward</b>	<b>Respondents</b>	<b>% of survey</b>
Bethnal Green North	13	4.4%
Bethnal Green South	20	6.8%
Blackwall and Cubitt Town	24	8.2%
Bow East	21	7.1%
Bow West	31	10.5%
Bromley-by-Bow	10	3.4%
East India and Lansbury	9	3.1%
Limehouse	15	5.1%
Mile End and Globe Town	22	7.5%
Mile End East	16	5.4%
Millwall	19	6.5%
Shadwell	18	6.1%
Spitalfields and Banglatown	11	3.7%
St Dunstan's and Stepney Green	17	5.8%
St Katharine's and Wapping	15	5.1%
Weavers	13	4.4%
Whitechapel	14	4.8%
Did not specify	6	2.0%
<b>Grand Total</b>	<b>294</b>	<b>100.0%</b>

DRAFT

DRAFT

## Top 2 Crime Priorities and Top 2 Crime Themes by Equalities Grouping

Ethnicity	Violence	Serious Acquisitive Crime	Youth Crime	Violence Against Women and Girls	Drugs and Alcohol	Other	Reducing Re-offending	Anti-Social Behaviour	Community Cohesion and Hate Crime	Public Confidence	Other2	Respondents
Asian or Asian British: Bangladeshi	26	25	22	8	37	*	23	41	21	16	*	57
White	91	97	82	41	50	7	80	138	69	42	5	184
All other ethnic groups	30	26	17	16	16	*	19	31	24	14	*	53
<b>Total</b>	<b>147</b>	<b>148</b>	<b>121</b>	<b>65</b>	<b>103</b>	<b>12</b>	<b>122</b>	<b>210</b>	<b>114</b>	<b>72</b>	<b>9</b>	<b>294</b>

Each ethnic group within 'all other ethnic groups' had 11 responses or fewer and so could not be disaggregated

Gender	Violence	Serious Acquisitive Crime	Youth Crime	Violence Against Women and Girls	Drugs and Alcohol	Other	Reducing Re-offending	Anti-Social Behaviour	Community Cohesion and Hate Crime	Public Confidence	Other2	Respondents
Female	48	55	44	32	37	*	42	78	50	23	*	111
Male	91	77	64	27	53	5	70	114	53	46	*	153
Not specified/ Other	8	16	13	6	13	5	10	18	11	*	*	30
<b>Total</b>	<b>147</b>	<b>148</b>	<b>121</b>	<b>65</b>	<b>103</b>	<b>12</b>	<b>122</b>	<b>210</b>	<b>114</b>	<b>72</b>	<b>9</b>	<b>294</b>

\* Less than 5 responses, so too few to show or measure



Age group	Violence	Serious Acquisitive Crime	Youth Crime	Violence Against Women and Girls	Drugs and Alcohol	Other	Reducing Re-offending	Anti-Social Behaviour	Community Cohesion and Hate Crime	Public Confidence	Other2	Respondents
0 - 16	6	5	10	*	5		6	11	7	5	*	15
17 - 24	9	15	9	5	12		10	13	9	6	*	25
25 - 39	72	70	63	35	38	5	62	105	57	28	*	139
40 - 49	27	23	23	10	24	*	23	38	23	15	*	53
50 - 59	18	20	13	8	19	*	12	30	11	11	*	40
60+	15	14	*	*	*	*	8	13	6	7	*	20
Not specified	2	2					1		1			2
<b>Grand Total</b>	<b>149</b>	<b>149</b>	<b>121</b>	<b>65</b>	<b>102</b>	<b>11</b>	<b>122</b>	<b>210</b>	<b>114</b>	<b>72</b>	<b>9</b>	<b>294</b>

Sexual orientation	Violence	Serious Acquisitive Crime	Youth Crime	Violence Against Women and Girls	Drugs and Alcohol	Other	Reducing Re-offending	Anti-Social Behaviour	Community Cohesion and Hate Crime	Public Confidence	Other2	Respondents
Heterosexual	94	95	78	45	64	6	87	142	73	47	6	191
Prefer not to say / Blank	38	43	29	18	34	6	26	54	28	19	*	80
LGBT	15	10	14	*	5		9	14	13	6	*	23
<b>Grand Total</b>	<b>147</b>	<b>148</b>	<b>121</b>	<b>65</b>	<b>103</b>	<b>12</b>	<b>122</b>	<b>210</b>	<b>114</b>	<b>72</b>	<b>9</b>	<b>294</b>

\* Less than 5 responses, so too few to show or measure

Disability	Violence	Serious Acquisitive Crime	Youth Crime	Violence Against Women and Girls	Drugs and Alcohol	Other	Reducing Re-offending	Anti-Social Behaviour	Community Cohesion and Hate Crime	Public Confidence	Other2	Respondents
No	119	115	98	53	79	6	101	168	92	60	5	233
Yes	10	7	7	*	8	*	5	12	6	5	*	17
Prefer not to say / Blank	18	26	16	11	16	*	16	30	16	7	*	44
<b>Grand Total</b>	<b>147</b>	<b>148</b>	<b>121</b>	<b>65</b>	<b>103</b>	<b>12</b>	<b>122</b>	<b>210</b>	<b>114</b>	<b>72</b>	<b>9</b>	<b>294</b>

\* Less than 5 responses, so too few to show or measure

Ward	Violence	Serious Acquisitive Crime	Youth Crime	Violence Against Women and Girls	Drugs and Alcohol	Other	Reducing Re-offending	Anti-Social Behaviour	Community Cohesion and Hate Crime	Public Confidence	Other2	Count of Request Id
Bethnal Green North	*	9	5	*	6	*	*	8	5	5	*	13
Bethnal Green South	7	7	11	5	8	*	7	15	10	*	*	20
Blackwall and Cubitt Town	12	13	7	7	6	*	9	18	8	7	*	24
Bow East	9	9	11	6	5		9	15	9	5		21
Bow West	16	15	15	8	9		16	21	11	6	*	31
Bromley-by-Bow	4	6	6	*	*		*	10	*	*		10
East India and Lansbury	6	4	3	*	*		*	8	6	*		9
Limehouse	6	8	7	*	7		11	11	*	6		15
Mile End and Globe Town	11	10	8	6	9	*	11	14	7	*		22
Mile End East	7	9	7	*	6		6	11	8	*		16
Millwall	12	8	8	*	6	*	6	15	5	6		19
Shadwell	7	12	8	*	8	*	5	12	*	*	*	18
Spitalfields and Banglatown	7	6	2	*	5		*	8	*	6		11
St Dunstan's and Stepney Green	9	6	9	6	*	*	8	11	8	*		17
St Katharine's and Wapping	10	10	*	*	*	*	7	10	8	*	*	15
Weavers	7	5	*	*	8	*	6	10	7	*		13
Whitechapel	11	7	5	5	*	*	5	9	8	6		14
Not specified	*	*	*	*	*		*	*	*			6
<b>Grand Total</b>	<b>147</b>	<b>148</b>	<b>121</b>	<b>65</b>	<b>103</b>	<b>12</b>	<b>122</b>	<b>210</b>	<b>114</b>	<b>72</b>	<b>9</b>	<b>294</b>

\* Less than 5 responses, so too few to show or measure

## Answer Combinations

Responses	Top priority combinations (not in order of priority)	
62	Violence	Serious Acquisitive Crime
37	Youth Crime	Drugs and Alcohol
35	Violence	Youth Crime
31	Serious Acquisitive Crime	Drugs and Alcohol
25	Serious Acquisitive Crime	Youth Crime
21	Serious Acquisitive Crime	Violence Against Women and Girls
21	Violence	Drugs and Alcohol
20	Violence	Violence Against Women and Girls
14	Youth Crime	Violence Against Women and Girls
<b>266</b>	<b>responses</b>	
<b>90.48%</b>	<b>of online survey sample</b>	

Responses	Top theme combinations (not in order of priority)	
80	Anti-Social Behaviour	Reducing Re-offending
71	Anti-Social Behaviour	Community Cohesion and Hate Crime
48	Anti-Social Behaviour	Public Confidence
27	Reducing Re-offending	Community Cohesion and Hate Crime
10	Public Confidence	Community Cohesion and Hate Crime
<b>236</b>	<b>responses</b>	
<b>80.27%</b>	<b>of online survey sample</b>	

## **Conclusion:**

This public consultation on top 3 community safety priorities has been the most extensive and responded to in the borough for a several years. Using multiple media channels and attracting 1,013 responses. Crime remains a significant concern of the borough residents as shown in the recent Annual Resident Survey (42% of 1,171 residents said it was their top concern).

The opportunity for members of the public in Tower Hamlets to tell us their priorities has been taken by a significant 1,013 people. Their priorities and ideas of how we can work together as a partnership (both agencies and communities), should be valued and seriously considered along with the findings of our Strategic Review (once produced). These perceptions and comments are key to addressing our community's fear of crime and confidence in the partnership and ultimately Tower Hamlets as a safe place to live.

While there have been a couple of minor flaws in the public consultation collection methods (namely the web page), this does not take anything away from the information that the Tower Hamlets has given us. Based solely on the number of selections by members of the public in Tower Hamlets across all the different collection methods, the top 3 community safety priorities for the Community Safety Plan 2013 are:

1) Anti-social Behaviour (ASB)	298
2) Serious Acquisitive Crime	200
3) Drugs and Alcohol	196
- Violence	196

**Timetable of CSP Plan Consultation and Plan Development:**  
(Presented to and signed off by CSP on 23<sup>rd</sup> February 2012)

**April – 14<sup>th</sup> June** Public and Partnership Consultation

- Extensive Public Consultation on levels of crime, disorder/anti-social behaviour, substance misuse and re-offending rates identifying community safety priorities for the 2013 onwards\* Plan
- Analysis of consultation findings for inclusion in Strategic Review
- Update on feedback from consultation exercise will be presented to the CSP on 13<sup>th</sup> June.

**1<sup>st</sup> July – 23<sup>rd</sup> August** Community Safety Strategic Review carried out

- The partnership agencies will produce the Strategic Assessment/Review and present the findings to the Partnership at 23<sup>rd</sup> August CSP Meeting.
- CSP then use the information in the Strategic Review and Consultation Findings to decide on the term of the next CSP Plan.

**24<sup>th</sup> August – 24<sup>th</sup> October** Community Safety Plan (2013 onwards\*) written

- Plan produced based on Public Consultation and Strategic Review Findings

**25<sup>th</sup> October – 11<sup>th</sup> December** Partnership Feedback on Draft Plan

- Partnership agencies send comments, amendments for Final version of the CSP Plan 2013\*
- Final draft of Plan is presented and approved by CSP at meeting on 11<sup>th</sup> December

**12<sup>th</sup> December 2012 – 31<sup>st</sup> March 2013** Council Approval Process

- Community Safety Plan 2013\* enters the council committee approval process (CMT, MAB, PAP and Cabinet), culminating in Full Council as per the Council Constitution.

## **Recommendations from Café Connect Discussions**

### **Menu 1 – Drugs, Alcohol and Anti-Social Behaviour**

*Drugs and alcohol issues are of particular concern for residents. Is this your experience?*

*How would you want the Police, Council and other partners to deal with those issues?*

#### *For police*

- Need to tackle visible drug dealing in local communities

#### *Council*

- Need more youth engagement via youth centres
- Early intervention – engage parents to educate about drugs/types (BME community)
- Use media options that work and reach communities
- Need programme for alternative therapy for skunk and cannabis users
- Some young people prefer alcohol treatment service that is specifically for them e.g. don't want to join older people/adults

#### *Police and Council*

- Need to work with registered social landlords – need rapid action
- Provide targeted social education (social marketing) to disengaged young people that shows the effects of underage drinking or irresponsible drinking.

#### *Peoples' observations/general comments*

- Young people drinking late on residential estates
- They influence others (younger peers)
- Anti-social drinking or drug use causes noise nuisance
- Friends are sometimes more supportive than families
- Hold conference with parents; get them involved in their children's rehabilitation.
- Dealing seen as income source; parents/guardians need to question young people's income sources.

### **Anti-social behaviour**

#### *For police*

- Police officers need to listen to residents/customers and do follow up work
- Need to actively engage the local community

#### *For council*

- Need coordination of services
- Need restorative justice programmes delivered in the community
- Facilitate more involvement from male parents/fathers

- More sporting programmes to engage people early

*Peoples' observations/general comments*

- Young people need more role models, senior police officers etc
- Parents need to take more ownership of their children's' behaviour

## **Menu 2 - Robbery and Burglary**

*Have you been or know somebody who has been a victim of burglary or robbery? And what impact did that have on you/them?*

*Have you been or know somebody who has been a victim of violent crime? And what impact did that have on you/them?*

*For police*

- Bag theft on licensed premises – delay in police response
- Educating youth regarding implication of crime, particularly knife crime

*For police and council*

- Education of community regarding reporting suspicious activity
- Weapons and drugs found in public places – need more regular maintenance of public places
- Thrill of crime – need to divert young people through youth club activities

*For council*

- Early intervention with problem youths
- Need to increase the safety of older people who are vulnerable

*Peoples' observations/general comments*

- Youth related crime is on the up – need to make parents more accountable
- Under reporting by BME people/communities
- Perception that robbery and burglary vehicle crime is up.

## **Menu 3- Youth and prolific offending**

*What can the Borough do to divert young people from crime and anti-social behaviour?*

*How can the community support the Council and partners in helping rehabilitate young people that have been previously involved in crime and criminality?*

*For council*

**Early Intervention -**

- Have provisions to target support to children and young people before problems escalate, including providing education around drugs.
- Provide support to parents of children and young people at risk of engaging in crime.



- Work closely with primary schools, to provide support to both parents and children.

Community Events: Involving young offenders –

- Engaging young offenders on court orders to help with events as part of their reparations session e.g. young offenders could assist by helping to put out tables and chairs, distribute leaflets for public events.
- Support community to organise intergenerational events such as tea mornings to help tackle negative perception held of young people

#### **Menu 4 - Hate Crime & Cohesion and Public Confidence**

*How would you want the Police to build / improve relationship with the community?*

*Given that there are lots of different communities in Tower Hamlets, do you think people live together peacefully?*

*For police*

- Crime figures need to be better explained and broken down into categories that lay people can understand
- Police need to provide feedback to victims of case outcome
- Police not recording incidents as hate crime; appearing to ignore it.
- Enable victims to provide feedback on police case investigations
- Need more higher visibility of police officers
- Community want to see evidence of crime falling e.g. transparency, openness and breakdown.

*For council and police*

- Educate young people and community about hate crime/cohesion
- Homophobia in schools is a part of everyday life and needs to be tackled
- Increased awareness of hate crime services for young people, agencies and communities
- Ignorance of what services are provided; residents do not know what police/council do

*Peoples' observations/general comments*

- We rarely see police on the streets
- We need to integrate communities, not segregate e.g. especially in housing
- People feel safer in London/THs than in other cities
- The only people you can rely on is the police
- This is a general cohesive borough
- Prejudice against certain groups of parents that 'they cannot look after their children'
- More can be done by Police to stop fights in schools
- Language prevents access to services
- In some parts of the borough, there is still respect for each other
- Muslim people respect Christians and vice versa.
- Tower Hamlets is a very diverse borough

- Groups of youths in Tower Hamlets are more respectful to older people than in other boroughs
- Older people are also harassed/ignored and vulnerable to crime

## **Menu 5 – Violence against Women and Girls**

*At least 1 in 4 women experience violence in their lifetime. The vast majority of the victims of domestic violence are women and children (over 95% of police reports in Tower Hamlets), and women are also considerably more likely to experience repeated and severe forms of violence, as well as sexual assault.*

*Partner agencies in the borough have a range of services to raise awareness, encourage reporting, support victims and take action against perpetrators of violence.*

*What kind of actions do you think are most important in addressing this problem?*

### *For council*

- Duty line – should be 24 hours not Mon-Fri, better promotion of this
- Organise themed awareness raising weeks e.g. tie a purple ribbon around a tree
- School places available for women's children if moving out (as women may not be allowed out)
- Encourage shopkeepers to report, put up posters
- Encourage schools to put up posters for women and parents; deliver talks to children - that it's not ok, they can tell
- Educate men; awareness programmes e.g. films – on control and early signs
- Youth clubs for boys and girls; to learn about equality between genders
- Provide anger management courses for men
- To provide suitable housing for those that are fleeing domestic violence
- Provide guidance for women on how to cope and stay safe
- Provide counselling/guidance for couples or signpost to such services
- Empower voices of women and children – your rights, you are valued (womenleadership development)

### *For council and police*

- Encourage people to report to police
- Support community centres to hold regular forums on this topic and will filter down
- Deal with cases where the woman drops the case e.g. if he promises never to do it again. Meet women in public/community centres. Police used as a warning e.g. if you do it again, you will be going to court
- Make clear where people can go
- Provide counselling services for victims and explain confidentiality if people report
- Design posters in different languages; deliver poster campaigns
- Facilitate men's access to childcare in public (not via woman), police on standby
- Provide, facilitate and support Safe houses

### *Peoples' observations/general comments*

- Children witness it are victims too – refer to social services
- Not only husband and wife, can be against older relatives/women

- Men are victims too; grown up children are victims too
- Not everyone will report to police, we need to explore other routes e.g. volunteers on the streets who people can go to
- Are the police the best agency to report to
- Encouraging men to consider their children more
- Men never go to police if victims
- Address cause of violence e.g. money problems, money management, alcohol, drugs, medicine/treatment
- BME communities – lack of reporting due to stigma and social issues e.g. rape would be a scandal and person not punished
- Churches and mosques (safe places) - their role in reporting to police.

### **Additional Comments from Public Consultation on Mytowerhamlets**

Due to the design of the online survey, people were still presented with the opportunity to list their other choice, even if they had not chosen the 'Other' option/answer. 116 people chose to submit an answer to 'Other', even though they had already chosen their top two priorities in each question. Whilst technically these can be included in the responses/findings of the survey they cannot be included in the official results as some people therefore had chosen their priorities twice.

Additional comments under 'Other' tend to reflect the top priorities, although they refer to specific types of issues within those broad offence/crime themes/types i.e. Youths causing ASB, which is a sub category of Anti-Social Behaviour; bicycle theft which is a sub category of Acquisitive Crime.

### Appendix 3 – Equalities Considerations

The Community Safety Plan 2013-16 is informed by both the Strategic Assessment 2012, which analyses data on the trends and future local challenges, and through consultation with both members of the public and the wide membership of the Community Safety Partnership (Safe and Cohesive Community Plan Delivery Group). A number of cross cutting issues were also considered as part of this process.

From this detailed evaluation of the strategic landscape and assessment of the most effective governance arrangements, priority areas were developed. This included consideration of the drivers of crime locally and equalities - through the impact on people from different protected characteristic groups. This has influenced the identification of the Plan's priorities for 2013-16, which are:

- Gangs and Serious Youth Violence
- Anti-Social Behaviour (including Arson)
- Drugs and Alcohol
- Violence (with a focus on Domestic Violence)
- Hate Crime and Cohesion

Cross-cutting Priorities:

- Public Confidence
- Reducing Re-offending

A high level test of relevance equalities screening has been undertaken on the Plan. This is attached as appendix 4. As the Plan is to be further developed through Community Safety Partnership (CSP) subgroup action plans – further detailed evaluation of equalities in the action plans will be undertaken by those subgroups to ensure they continue to be considered with the development of the Plan.

The Plan is a jointly owned partnership approach – it is not solely owned by the Council – so the authority will communicate the importance of ensuring subgroups give 'due regard' to equalities in the action plan development process and are aware of the requirement to provide appropriate evidence: These considerations will be recorded through the inclusion of equalities considerations in the template for creating their action plans. As sub-group action plans are presented to the Community Safety Partnership (Safe and Cohesive CPDG) equalities considerations will be evaluated by the members.

## Appendix 4 Equalities Analysis - Initial Screening Document

This document is to be used for:-

- Establishing whether an Equality Analysis needs to be undertaken for the policy, function or strategy. *(Based on Section 4 around Impacts)*
- Reviewing existing equality analysis (EQIA) to ascertain whether the original EQIA needs revising.

### Section 1 – General Information

Name of the Policy or Function Safe and Cohesive Plan 2013-16
Service area Safer Communities Service
Team name The Community Safety Partnership
Service manager Emily Fieran-Reed
Name and role of the officer completing the Initial Screening <i>(Explain why these people were selected i.e. the knowledge and experience they bring to the process)</i> Colin Hewitt – CSP Officer, Community Safety

### Section 2 - Information about the Policy or Function

Is this a policy or function?	Policy <input checked="" type="checkbox"/>	Function <input type="checkbox"/>
Is the policy or function strategic or developmental?	Strategic <input checked="" type="checkbox"/>	Developmental <input type="checkbox"/>
Is this a new or existing policy or function?	New <input checked="" type="checkbox"/>	Existing <input type="checkbox"/>
If for a new policy or function, please indicate the date this form was undertaken April 2013		
If for an existing policy or function, what was the original date(s) the equality analysis (Initial Screening or EQIA) was undertaken <i>(please attach a copy of any previous equality analysis)</i>		
What are the main aims and objectives of the Policy or Function		
There is a legal requirement for each Community Safety Partnership formerly Crime and		

Disorder Reduction Partnership (Safe & Cohesive CPDG) to have a Community Safety Plan.

The Safe and Cohesive Plan 2013-2016 has been created in consultation with members of the Safe & Cohesive CPDG. The objective of the Plan is to address the following local priorities:

- Gangs and Serious Youth Violence
- Anti-Social Behaviour (including Arson)
- Drugs and Alcohol
- Violence (with a focus on Domestic Violence)
- Hate Crime and Cohesion

Cross-cutting Priorities:

- Public Confidence
- Reducing Re-offending

Who are the main stakeholders:

The London Borough of Tower Hamlets  
The Police  
London Fire Brigade  
Probation Services  
Tower Hamlets Primary Care Trust  
Those who live, work and visit the borough

Is this policy/function associated with any other policy or function of the Council  
(i.e. *Community Plan, One Tower Hamlets etc.*)

- The Community Plan
- Children and Young People's Plan
- Substance Misuse Strategy 2011-2014 (Drugs & Alcohol)
- Violence Against Women and Girls Strategy
- Integrated Offender Management Plan
- Tower Hamlets Prevent Delivery Plan (under review in line with National Guidance)
- ASB Profile
- Hate Crime Strategy
- Community Cohesion Contingency Plan

### Section 3 – Information about Existing Policies and, or Changes to Functions only

Has there been any 'significant' change to the Policy or Function?

Yes  No

If yes, Please indicate what the change will be and what has brought about this change to the policy or function?

**has been NO SIGNIFICANT amendments to an existing policy/function there is no need to continue to Section 4 below or a full equalities analysis**

DRAFT

## Section 4 – The Impact

*(Briefly assess the potential impact that the policy/function could have on each of the target groups. The potential impact could be negative, positive or neutral. If you have assessed negative potential impact for any of the target groups you will need to also assess whether that negative potential impact is high, medium or low). Please also indicate if there is any link to Community Cohesion.*

Identify the potential impact on the following groups and:

<b>Target Groups</b>  What impact will the 'new' or 'significantly' amended policy or function have on specific groups of service users?	<b>Impact – Positive or Adverse</b>	<b>Reason(s)</b> <ul style="list-style-type: none"> <li>• Please add a narrative to justify your claims around impacts and,</li> <li>• Please describe the analysis and interpretation of evidence to support your conclusion as this will inform members decision making</li> <li>• Can the negative impact be justified on the grounds of promoting equality?</li> </ul>
Race	Positive	<p>For race equality the priority of addressing Hate Crime and Cohesion may be of particular relevance.</p> <p>The data collected in the CSP Strategic Assessment 2012 suggests that depending on your racial background, the likelihood of you being a victim of crime or identified as a perpetrator of crime varies significantly. The analysis below summarises this information and sets out key areas which will be addressed by sub-groups in developing detailed plans to reduce crime, protect victims and promote equality for people from different racial backgrounds.</p> <p><b>National crime data</b> There is a significant amount of national and regional evidence about the different experiences of crime by people from different racial background, some of which is summarised below. These suggest possible areas of inequality locally. In developing the CSPP sub-group action plans we will seek to collect and analyse local data to identify patterns in the borough:</p> <p><b>Overall crime:</b> Analysis from the Ministry of Justice's Statistics on Race and the Criminal Justice System 2010 and according to the 2010/11 British Crime Survey, showed that nationally the risk of</p>



being a victim of personal crime was higher for adults from a Mixed background than for other ethnic groups. It was also higher for members of all BME groups than for the White group. Over the five year period 2006/7 to 2010/11, there was a statistically significant fall in the risk of being a victim of personal crime for members of the White group of 0.8%. The apparent decrease for those from BME groups was not statistically significant.

**Violent crime:** Of the 2,007 homicides nation-wide recorded between 2007/8 and 2009/10, 75% of victims were White, 12% Black and 8% Asian. These proportions are lower for the white group and higher for the Black and Asian groups than reflected in estimates of the general population. In the majority of homicide cases, victims were suspected of being killed by someone of the same ethnic group, which is consistent with the previous trend (88% of White victims, 78% of Black victims and 60% of Asian victims).

**Arrest and sanction rates:** Across England and Wales, there was a 3% decrease in the total number of arrests in 2009/10 (1,386,030) compared to 2005/6 (1,429,785). The number of arrests for the White group also decreased during this period, arrests of Black persons rose by 5% and arrests of Asian people by 13%. Overall, there were more arrests per 1,000 population of each BME group (except for Chinese or Other) than for people of White ethnicity in 2009/10. Per 1,000 population, Black persons were arrested 3.3 times more than White people and those from Mixed ethnic group 2.3 times more than White people.

Conviction ratios for indictable offences were higher for White persons in 2010 than those in the Black and Asian groups (81% for White, 74% for Black and 77% for Asian). A higher percentage of those in the BME groups were sentenced to immediate custody for indictable offences than in the White group in 2010 (White 23%, Black 27%, Asian 29% and Other 42%), this is mainly due to differences in plea between ethnic groups.

**Regional crime data:**

Analysis from the MOPAC Policing and Crime Plan 2013-17 Equality Impact Assessment 2013 states that London is disproportionately affected by crime problems, such as robbery and knife crime, typically associated with young males who often operate in groups or 'gangs'. Current analysis shows that all of the gang members scored on the MPS matrix are male and that 79% are described as Black and Minority Ethnic (BME). In 2011 14% of homicides (19) were gang related and two thirds (12) were

teenagers and all but one was male and from a BME background.

**Hate crime:** Analysis from the MOPAC Policing and Crime Plan 2013-17 Equality Impact Assessment 2013 states that hate crime is greatly unreported and which is a great concern for many communities. In 2011/12 there was a 6.8% reduction in the number of reported racist and religious hate crimes.

Analysis by the Home Office shows that there were 43,748 hate crimes recorded by the police in 2011/12 in England and Wales, of which 35,816 (82%) were race hate crimes

The number of Racially motivated crimes/incident recorded by the Police in 2010/11 was 18% lower at 51,187, than they were during the 5 year period 2006/7 to 2010/11.

#### **Local data**

**Analysis** from the CSP Strategic Assessment 2012 under Cohesion & Hate Crime indicator recording the number of racist and religious offences showed a 9% decrease (34 less) in the number of offences in the year up to September 2012, when compared to the previous year. Offence numbers have remained reasonable static for the last 3 years, with an average of 358 offences a year, or one a day.

**Recommendations** from CSP Strategic Assessment to CSP and Subgroups were that their action plans should maintain a continued focus on all Hate Crime Offences of which Racist and Religious Offences fall into. The CSP and its Subgroups to continue their work around education of potential victims and suspects within this crime category and to carry on with various education/crime prevention plans linked to this subject.

**Analysis** from the CSP Strategic Assessment 2012 provided by the Metropolitan Police to Victim Support regarding victims of crime by ethnicity and age is not thorough and reliant on the information recorded on the Police CRIS system. However combined figures for segmented groups into large groups (Asian, White, Black, Other) shows that during the period 1<sup>st</sup> October 2011 to 30<sup>th</sup> September 2012, 45% of victims of crime were from the White group, 35% from the Asian group and 9% from the Black group. Population figures for Tower Hamlets from the 2011 Census shows 45% from the White group, 41% from the Asian Group and 7% from the Black group. Therefore the Asian group is underrepresented by 6 percentage points and the Black group is over represented by 2 percentage points.

		<p>Looking at crime breakdown by ethnicity White people are over represented in the borough being victims to 60% of burglary and 50% of robbery, when compared to the population figure of 45%. Black people are over represented in the borough being victims to 12% of violent crime, when compared to the population figure of 7%.</p> <p><b>Recommendation</b> from Victim Support in the CSP Strategic Assessment 2012 is for the Metropolitan Police to improve the recording of specific hate crime categories which will improve the referrals to Victim Support via the automatic data transfer from the Police CRIS system. More accurate recording of ethnicity of victims will enable Victim Support to analyse trends in crimes for the borough and assist in targeted work for CSP Subgroups to deliver.</p>
Disability	Positive	<p>For disability equality, the priority of addressing Hate Crime and Cohesion may be of particular relevance.</p> <p><b><u>National and regional data</u></b></p> <p><b>Analysis</b> by the Home Office shows that there were 43,748 hate crimes recorded by the police in 2011/12 in England and Wales, of which 1,744 (4%) were disability hate crimes</p> <p><b>Analysis</b> of regional police force figures show that there were 133 disability hate crimes recorded by the Metropolitan Police Force in 2011. This demonstrates a 14.66% increase on the number of recorded disability hate crimes in 2010 (116) and a 34% increase when compared to the ACPO figures for London in 2009 (99).</p> <p><b>Analysis</b> in the British Crime Survey 2010/11 shows that Disabled people are significantly more likely to be victims of crime than non-disabled people. This gap is largest amongst 16-34 year-olds where 39 per cent of disabled people reported having been a victim of crime compared to 28 per cent of non-disabled people. Disabled people are less likely than their non-disabled peers to think the Criminal Justice System (CJS) is fair. This gap is largest amongst 16-34 year-olds, where 54 per cent of disabled people think that the CJS is fair compared to 66 per cent of non-disabled people</p> <p><b>Analysis</b> from the MOPAC Policing and Crime Plan 2013-17 Equality Impact Assessment 2013 states that hate crime is greatly unreported and which is a great concern for many communities. There is significant underreporting of disability hate crimes (according to the Met's 2011/12 Annual Report).</p>

		<p><b>Local data:</b></p> <p><b>Analysis</b> from the Tower Hamlets Local Voices report (Hearing the Voices of Disabled People in Tower Hamlets) produced by REAL in 2013, of which 99 disabled people responded to the survey showed that the number one issue for 12% of the survey respondents and number 2 issue for 9.1% of the respondents was Crime and Safety. Older people, Asian people and those with a Mental Health condition has slightly higher levels of concern and a greater sense that crime and safety services were failing disabled people than others. Nearly half of the survey respondents disagreed/strongly disagreed that disabled people were safe from harassment and hate crime and only 30% agreed they were safe. Within each gender, age and ethnicity groups of those disabled people who completed the survey, it was Men, people under 60 and Asian people who most tended not to agree that disabled people were safe. Amongst different impairment groups, disagreement was particularly high for people with visual impairment (55%), people with learning disability or cognitive impairment (80%) and people with mental health condition (87%). Overall 28% of survey respondents believed crime and safety services did not serve disabled people well, making it fourth worst performing service out of the survey. People with visual impairment were particularly critical, with 25% saying it fails disabled people.</p> <p><b>Response</b> - In line with the equalities duty and the No Place For Hate &amp; Domestic Violence action plan, The Domestic Violence &amp; Hate Crime Team are committed to supporting both agencies and disabled service users in the context of all crime and disorder.</p> <p>The DV &amp; Hate Crime Team currently provide monthly training to service users who experience mental health illness &amp; learning disabilities around recognising what domestic violence and hate crime is, which also shows them how they can report incidents. We have recently produced an 'easy read' DV leaflet for adults with learning disabilities and will have finished an easy read HC leaflet by November 2013. The team also provide regular training to the Community Mental Health Team, Safeguarding Adults Board, Safeguarding Adults Champions and local community groups including REAL, Positive East and MIND.</p>
Gender	Positive	<p>For gender equality, the priority of addressing Violence (with a focus on Domestic Violence) may be of particular relevance.</p> <p><b>National and regional data</b></p>

**Analysis** from the Ministry of Justice's Statistics on Women and the Criminal Justice System 2012, shows an estimated three in every 100 adults were a victim of violent crime according to the Crime Survey England and Wales 2011/12, with 2% of women reporting being victims of violent crime compared to 4% of men. The type of violence most commonly reported differs by gender. Women who reported being a victim of violence were most commonly victimized by an acquaintance whereas men most commonly were victims of stranger violence.

A higher proportion of women reported being victims of intimate violence such as partner or family non-physical abuse, threats sexual assault or stalking - 7% of women compared with 5% of men.

201 women were victims of homicide in 2010/11 compared with 435 men according to data from the Homicide Index. A greater proportion of female victims than male victims knew the principal suspect, 78% and 57% respectively in 2011.

34% of females and 31% of males were arrested for violence against the person in 2010/11 - the most common offence group for arrest during the five year period 2006/7 to 2010/11.

According to the Ministry of Justice figures for 2010/11 by Police Force area, the Metropolitan Police arrested 50,293 men and 9,464 women that year for Violence Against the Person. The next highest was 28,207 arrests of men and 8,471 arrests of women for Theft and Handling, followed by 20,980 arrests of men and 1,894 arrests of women for Drug Offences.

Nationally more than 1.2m persons of known gender were convicted and sentenced at all courts in 2011. Of these 24% were female and 76% were male.

**Analysis** from the MOPAC Policing and Crime Plan 2013-17 Equality Impact Assessment 2013 states that London is disproportionately affected by crime problems, such as robbery and knife crime, typically associated with young males who often operate in groups or 'gangs'. Current analysis shows that all of the gang members scored on the MPS matrix are male. In 2011 14% of homicides (19) were gang related and two thirds (12) were teenagers and all but one was male.

**Local data**

**Analysis** from the CSP Strategic Assessment 2012 under Violent Crime Indicator for the 'Number of Most Serious Violence offences per 1,000 of the population' and 'Number of Assault with Injury' show that victims are more likely to be male although repeat victims are more likely to be female. Currently

(October 2013) Non Domestic Violence with Injury accounts for 68% and Domestic Violence With Injury accounts for 32% of all Violence with Injury in the borough. In the town centre hotspot, victims and suspects are less likely to know each other. When they do know each other they are more likely to be acquaintances, whereas on the rest of the borough, they are more likely to have been in a past or current relationship with each other (domestic violence).

**Recommendations** from CSP Strategic Assessment to CSP and Subgroups was that their action plan should include a continued focus on Violence Related Offences, the Community Safety Partnership to continue its work around education of potential victims and suspects within this crime category. Carry on with various education plans linked to this subject and continue crime prevention programmes. The subgroup responsible for the CSP Priority Violence (with a focus on Domestic Violence) action plan should contain detailed actions to address these findings, which should lead to a decrease in the number of offences and an increase in partnership working, social cohesion and education around this subject.

**Analysis** from the CSP Strategic Assessment 2012 under Violence Against women and Girls, measures the number of Domestic Violence Offences shows an increase in the number of offences by 6% year on year over the three year period. This increase could be down to a number of factors including numbers of people living in the borough, overcrowding and the economic downturn, particularly the associated pressures that these can bring, but also may be down to an increase in confidence to report offences. A lot of work has been done in the borough to raise awareness of domestic violence, specifically Violence Against Women and Girls as it has been both nationally and locally grossly under reported. The Crime Survey for England and Wales estimates that since the age of 16, 29% of Women have experienced Domestic Violence; 20% have experience Sexual Assault and 19% have experienced Stalking. Approximately 97% of all known victims of interpersonal violence in Tower Hamlets are Female, which is a significant gender bias towards Women.

**Recommendations** from CSP Strategic Assessment to CSP and Subgroups were that their action plan should include a continued focus on all violence related offences, especially those that can be linked to Domestic Violence. The CSP and Subgroups should continue to work and focus around education of potential victims and engaging with suspects within this crime category. Carry on with various education plans linked to this subject and continue with gender specific crime prevention programmes.

Gender Reassignment	Positive	<p>For transgender equality, the priority of addressing Hate Crime and Cohesion may be of particular relevance, as this priority aims to address all hate crimes, of which trans phobic crime is one.</p> <p><b>Analysis</b> by the Home Office shows that there were 43,748 hate crimes recorded by the police in 2011/12 in England and Wales, of which 315 (1%) were transgender hate crimes.</p> <p>In 2013 Galup's hate crime report stated that there were only 50 transphobic crimes recorded in London during 2012/13, yet anecdotal evidence collected by Galup identifies individual trans people who are the target of over 50 transphobic crimes each year.</p> <p>We do not have any local or borough data to analyse as there were no recorded trans phobic crimes in last year according to the local Police data.</p>
Sexual Orientation	Positive	<p>For Lesbian, Gay and Bisexual people, the priority of addressing Hate Crime and Cohesion may be of particular relevance.</p> <p><b><u>National and regional data</u></b></p> <p><b>Analysis</b> by the Home Office shows that there were 43,748 hate crimes recorded by the police in 2011/12 in England and Wales, of which 4,252 (10%) were sexual orientation hate crimes.</p> <p><b>Analysis</b> from the MOPAC Policing and Crime Plan 2013-17 Equality Impact Assessment 2013 states that hate crime is greatly unreported and which is a great concern for many communities. In 2011/12 there was a 5.5% reduction in the number of reported homophobic crimes.</p> <p>A report on homophobic crime produced by the Equality and Human Rights Commission shows that LGB people appear to worry about being the victim of crime to a greater degree than other minority groups. In 2008 around 40 per cent of LGB people say they are worried about being the victim of a crime. This compares to 13 per cent of people on average who are worried about being the victim of a crime. A survey of Homophobic hate crime in 2008 showed that eleven per cent of LGB people say being the victim of a crime is their biggest worry.</p> <p><b><u>Local data</u></b></p> <p><b>Analysis</b> from the CSP Strategic Assessment 2012 under Cohesion &amp; Hate Crime indicator recording the number of Homophobic offences shows no pattern in the levels of offences each year. The figures</p>

		<p>from the control period shows increases one year and decreases the following, this is due to the low number of offences that are reported each year in the borough, 71 in the year up to September 2012. Over the past three years the average number of offences was 73.</p> <p><b>Recommendations</b> from CSP Strategic Assessment to CSP and Subgroups were that their action plan should maintain a continued focus on all Hate Crime Offences of which Homophobic Crime can be categorised. The CSP and its Subgroups should continue their work around education of potential victims to boost confidence and increase reporting and work with the LGB community to address homophobic attitudes which drive hate incidents and hate crimes. It should also carry on with various education/crime prevention plans linked to this subject to prevent further incidents/crimes.</p>
Religion or Belief	Positive	<p>For Religion/Belief equality, the priority of addressing Hate Crime and Cohesion may be of particular relevance.</p> <p><b><u>National and regional data</u></b>  <b>Analysis</b> by the Home Office shows that there were 43,748 hate crimes recorded by the police in 2011/12 in England and Wales, of which 1,621 (4%) were religion hate crimes.</p> <p><b>Analysis</b> from the MOPAC Policing and Crime Plan 2013-17 Equality Impact Assessment 2013 states that hate crime is greatly unreported and which is a great concern for many communities. In 2011/12 there was a 6.8% reduction in the number of reported racist and religious hate crimes.</p> <p><b><u>Local data</u></b>  <b>Analysis</b> from the CSP Strategic Assessment 2012 under Cohesion &amp; Hate Crime indicator recording the number of racist and religious offences showed a 9% decrease (34 less) in the number of offences in the year up to September 2012, when compared to the previous year. Offence numbers have remained reasonable static for the last 3 years, with an average of 358 offences a year, or one a day.</p> <p><b>Recommendations</b> from CSP Strategic Assessment to CSP and Subgroups were that their action plans should maintain a continued focus on all Hate Crime Offences of which Racist and Religious Offences fall into. The CSP and its Subgroups to continue their work around education of potential victims and suspects within this crime category and to carry on with various education/crime prevention plans linked to this subject.</p>



Age	Positive	<p>For ageequality , the priorities of addressing Gangs &amp; Serious Youth Violence and Reducing Re-offending may be of particular relevance.</p> <p><b><u>National and regional data</u></b></p> <p><b>Analysis</b> from the Mayor's Office for Policing and Crime states that London is disproportionately affected by crime problems, such as robbery and knife crime, typically associated with young males who often operate in groups or 'gangs'. In 2011 14% of homicides (19) were gang related and two thirds (12) were teenagers. Gang members mostly fall into the 13-24 age range, with the largest cohort being 18-24 (75% of the highest harm individuals are over the age of 18); intelligence also suggests that 10-13 year olds are increasingly being drawn into gang membership.</p> <p><b>Analysis</b> from the Ministry of Justice's Breaking the Cycle: Effective punishment, rehabilitation and sentencing of offending 2010, states that 75% of young people released from custody and 68% of young people on community sentences re-offend within a year</p> <p><b>Analysis</b> from the CSP Strategic Assessment 2012 provided by the Metropolitan Police to Victim Support regarding victims of crime by ethnicity and age is not thorough. However looking at victim breakdown by age shows that 18 – 24 year olds are over represented at 24% of the borough's victims when compared to the population figure from the 2011 census of 12%. It also shows that 25-34 year olds are over represented in the victim breakdown for the borough at 34%, when compared to this group making up 25% of the population.</p> <p><b><u>Local data</u></b></p> <p><b>Analysis</b> from the CSP Strategic Assessment 2012 under Violent Crime Indicator for the 'Number of Most Serious Violence offences per 1,000 of the population' and 'Number of Assault with Injury' show that offenders and victims show similar patterns of age, with a peak occurring in the 20's and a steep decline as age increases.</p> <p><b>Recommendations</b> from CSP Strategic Assessment to CSP and Subgroups was that their action plan should include a continued focus on Violence Related Offences, the Community Safety Partnership to continue its work around education of potential victims and suspects within this crime category. Carry on with various education plans linked to this subject and continue crime prevention programmes. The subgroup responsible for the CSP Priority Violence (with a focus on Domestic Violence) action plan should contain detailed actions to address these findings, which should lead to a decrease in the number of offences and an increase in partnership working, social cohesion and education around this</p>
-----	----------	---

subject. It recommends a continued investment in youth diversionary/outreach services to prevent young people being involved in crime and anti-social behaviour either as a victim or a perpetrator. The borough Gangs Matrix aims to tackle those already involved in gang activity/crime, offering ways out of offending behaviour or where this is not accepted by the offender, taking enforcement action against them.

**Analysis** from the CSP Strategic Assessment 2012 under Violent Crime Indicator for the number of 'Hospital admissions for unintentional and deliberate injuries for young people aged 0 – 17 years, shows that 0 – 4 and 5 – 14 age groups by 3 year pooled data, show downward trends in the numbers of admissions, with a more pronounced downward trend in 0 – 4 year age group.

**Recommendations** from CSP Strategic Assessment to CSP and Subgroups are for

- Programmes that support parents and families, develop life skills in children, work with high risk youth and reduce availability of and misuse of alcohol have proven effective at reducing violence. Measures to ensure appropriate identification, care and support mechanisms are in place are important in minimising the harms caused by violence and reducing its recurrence.
- Reducing violence to 0-5 does depend on widespread, multi-sectorial action and requires a well-planned strategic approach to involving all members of the partnership and Local Safeguarding Children Board. Moving straight into action planning now would be precipitate. However better data on presentations to A7E (work is on-going), we need better information on what is being delivered across the piece and thirdly we need a strategy that sets out what, why and how we are proposing action.

The subgroup responsible for the CSP Priority Violence (with a focus on Domestic Violence) and Local Safeguarding Children Board (LSCB) action plans should contain detailed actions to address these findings, which should lead to a decrease in the number of offences and an increase in partnership working, social cohesion and education around this subject.

**Analysis** from the CSP Strategic Assessment 2012 under Property Crime indicator 'Number of Personal Robberies' will also contain some correlation with Serious Youth Violence and Knife Crime and shows that School pupils and students account for almost half of all victims on the borough, with mobile phones being the most frequently stolen property around 29% of all property taken. Personal Robbery appears to be mainly a crime whereby the majority of suspects are aged between 15 and 19 years and the majority of victims tend to be youths. Knife Enabled Robbery remained a persistent

	<p>proportion of all personal robbery offences.</p> <p><b>Recommendations</b> from CSP Strategic Assessment to CSP and Subgroups was that their action plan should include a continued focus on Personal Robbery Offences and offenders as there are overlaps between offenders for robbery and other offence types. Community Safety Partnership and subgroups to continue their work around education of potential victims and suspects within this crime category. Carry on with various education plans linked to this subject and continue with crime prevention programmes. The subgroups responsible for the CSP Priorities Reducing Re-offending and Gangs &amp; Serious Youth Violence action plans should contain detailed actions to address these findings, which should lead to a decrease in the number of offences and an increase in partnership working, social cohesion and education around this subject.</p> <p><b>Analysis</b> from the CSP Strategic Assessment 2012 under Youth Crime, measures the number of victims, offenders, incidents, entering custody, successfully completing orders and proven re-offending of young people. They show clear correlations between Knife Crime Offences, Robbery Offences and Serious Youth Violence as these offences tend to overlay each other in crime types and peak and trough at the same time throughout the year.</p> <p><b>Recommendations</b> from CSP Strategic Assessment to CSP and Subgroups was that their action plan should acknowledge the clear correlation between Knife Crime, Robbery and Serious Youth Violence and vital partnership working around all three identify the link and adapt their plans accordingly to ensure that they are all part of the strategy and performance measure. Increase in activity around hotspot wards for these offences will impact on one another as there is a link between the schools and robbery offences. Partnership working around facilities provided (ie. Schools, youth clubs and leisure facilities), as 80% of all Tower Hamlets' serious youth violence victims lives within the borough. The subgroups responsible for the CSP Priorities Reducing Re-offending and Gangs &amp; Serious Youth Violence action plans should contain detailed actions to address these findings, which should lead to a decrease in the number of offences and an increase in partnership working, social cohesion and education around this subject.</p> <p><b>Analysis</b> from the CSP Strategic Assessment 2012 under Drugs and Alcohol, measures the number of Young People taking drugs and or alcohol in specialist treatment has shown an 11.5% increase in the number of Young People in treatment over the three year period. This could be down to the realignment of services due to changes in funding, the YOT becoming part of the specialist treatment</p>
--	---

		<p>network and having a dedicated drug worker or a combination of both. However it is expected that the performance over the coming 3 years is likely to stay relatively stable, which goes against the national trend of a decrease over both periods.</p> <p><b>Recommendations</b> from CSP Strategic Assessment to CSP and Subgroups was that specialist treatment service should continue to be monitored and adjustments made to it in accordance with the needs of the users/clients.</p> <p><b>Analysis of National Research</b> shows that Domestic violence is a significant issue for the welfare of children and young people. It is estimated that nearly three quarters of children on the ‘at risk’ register live in households where domestic violence is occurring (Department of Health 2002 – Women’s Mental Health: Into the mainstream). The majority of children in households experiencing domestic violence will witness abusive behaviour. It is estimated that 90% of children are in the same or next room when abuse occurs (Hughes, 1992)</p> <p><b>Response</b> from Tower Hamlets Safeguarding Children’s Board is that it has risk assessment tool to support professionals in identifying risks to children in families experiencing domestic violence and ensure appropriate response and actions. The tool and accompanying guidance supports the London safeguarding children board procedure “Safeguarding children abused through domestic violence”.</p>
Socio-economic	Positive	<p>For this target group, the priorities of Drugs and Alcohol and Reducing Re-offending may be of particular relevance.</p> <p><b>Analysis</b> from the CSP Strategic Assessment 2012 under Violence Against women and Girls, shows an increase in the number of domestic violence offences by 6% year on year over the three year period. This increase could be down to a number of factors including an increasing number of people living in the borough; overcrowding and; the economic downturn, particularly the associated pressures that these can bring, but also may be down to an increase in confidence to report offences.</p> <p><b>Recommendations</b> from CSP Strategic Assessment to CSP and Subgroups were that their action plans should include a continued focus on all violence related offences, especially those that can be linked to Domestic Violence. The CSP and Subgroups should continue to work and focus around</p>

		education of potential victims and engaging with suspects within this crime category. Carry on with various education plans linked to this subject and continue with crime prevention programmes.
Marriage and Civil Partnerships.	Positive	No data available for analysis
Pregnancy and Maternity	Positive	<p><b>Research</b> nationally shows that It is estimated 30% of domestic violence begins or escalates during pregnancy, and it has been identified as a prime cause of miscarriage or still-birth, premature birth, foetal psychological damage, foetal physical injury and foetal death. The mother may be prevented from seeking or receiving adequate ante-natal or post-natal care. In addition, if the mother is being abused this may affect her attachment to her child, more so if the pregnancy is a result of rape by her partner.</p> <p><b>Response</b> from the CSP and the DV Forum is that they have recognised this increased risk during pregnancy and recent birth of a child. It has included this in their Domestic Abuse Stalking and Honour-based Violence Risk Assessment Form, for consideration of individual cases when taking cases to their Multi Agency Risk Assessment Conference on a bi-monthly basis.</p>

As a result of completing the above, what is the potential impact of your policy/function on the public, giving particular regard to potential impacts on minority or protected groups?

High  Medium  Low

**Equalities to be further considered at the Action Planning stage.**

**If you have identified a LOW impact or, there has been NO SIGNIFICANT amendments to an existing policy/function there is no need to continue to a full equalities analysis.**

**If you have assessed the potential impact as MEDIUM or HIGH you will now need to complete a full equalities analysis - building upon the findings of the initial impact assessment (section 4)**

## Appendix 5 Borough Crime Statistics & Trends 2000/01 – 2012/13

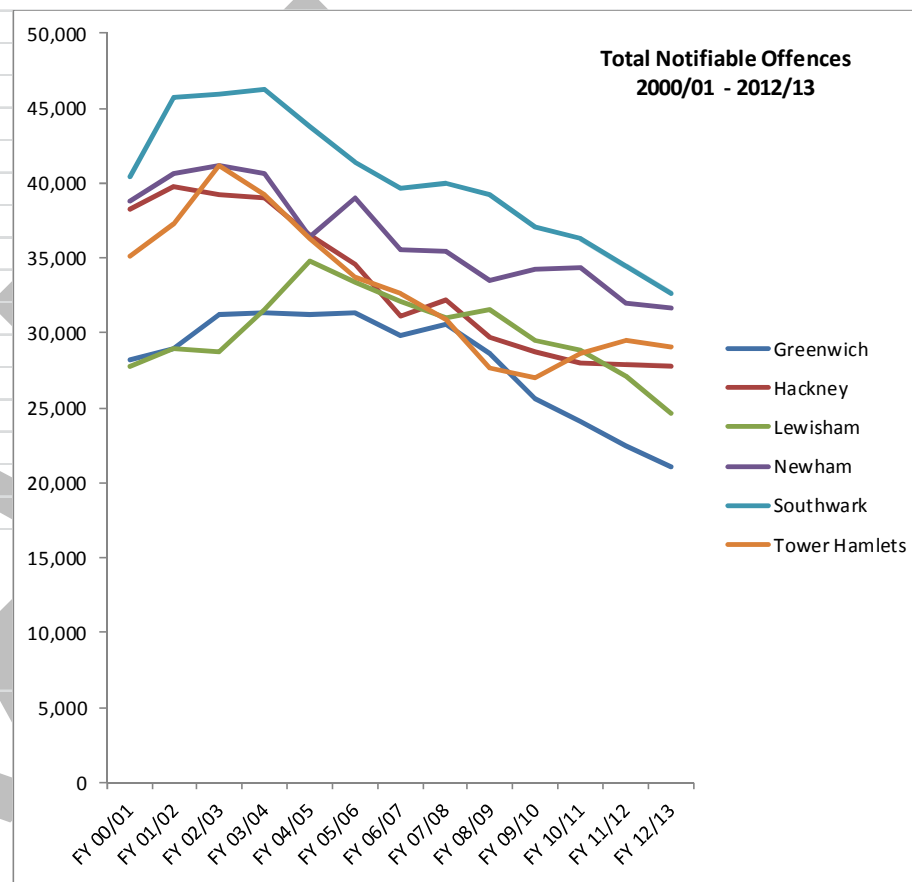
### Tower Hamlets Crime Types 2000/01 – 2012/13

Year	Violence Against The Person Total	Sexual Offences Total	Robbery Total	Burglary in a Dwelling	Theft/Taking Of Motor Vehicle	Theft From Motor Vehicle	Theft Person	Criminal Damage Total	Dealer a Day Arrests	Total Notifiable Offences
FY 00/01	5965	383	1757	1878	2466	4374	538	4608		35,070
FY 01/02	6390	347	2117	1900	2225	5091	1059	4710		37,273
FY 02/03	7538	449	1790	2114	2260	6026	943	5278		41,124
FY 03/04	7724	372	1568	1735	2094	4471	830	5036		39,188
FY 04/05	7895	410	1457	1699	1843	3437	595	4427		36,329
FY 05/06	7455	401	1675	2108	1570	3642	578	3720		33,756
FY 06/07	7727	403	1908	1638	1289	2965	479	3523		32,627
FY 07/08	6701	354	1367	1585	1161	3004	316	3326		30,892
FY 08/09	6070	309	1069	1077	898	2441	878	3130	421	27,712
FY 09/10	6195	336	934	1073	797	1672	1158	2948	409	26,989
FY 10/11	6302	378	1163	1231	825	2133	1366	2804	412	28,668
FY 11/12	5817	431	1415	1538	873	1944	1606	2464	433	29463
FY 12/13	6119	380	1440	1390	842	1817	1816	2190	397	29033
Difference 2012/13 - 2011/12 (percentage)	↑ 302 (5.19%)	↓ 51 (11.83%)	↑ 25 (1.76%)	↓ 148 (9.62%)	↓ 31 (3.55%)	↓ 127 (6.53%)	↑ 210 (13.07%)	↓ 274 (11.12%)	↓ 36 (8.31%)	↓ 430 (1.45%)
Difference 2012/13 - 2000/01 (percentage)	↑ 154 (2.58%)	↓ 3 (0.78%)	↓ 317 (18.04%)	↓ 488 (25.98%)	↓ 1624 (65.85%)	↓ 2557 (58.45%)	↑ 1278 (237%)	↓ 2418 (52.47%)	↓ 24 (5.7%) 2012/13 - 2008/09	↓ 6037 (17.21%)

## Total Notifiable Offences Comparison with Surrounding Boroughs 2000/01 – 2012/13

Year	Total Notifiable Offences					
	Greenwich	Hackney	Lewisham	Newham	Southwark	Tower Hamlets
FY 00/01	28,165	38,242	27,814	38,776	40,447	35,070
FY 01/02	28,995	39,769	29,008	40,616	45,707	37,273
FY 02/03	31,202	39,267	28,763	41,157	45,960	41,124
FY 03/04	31,347	39,035	31,577	40,615	46,276	39,188
FY 04/05	31,186	36,492	34,833	36,460	43,771	36,329
FY 05/06	31,354	34,630	33,387	39,020	41,432	33,756
FY 06/07	29,829	31,160	32,150	35,597	39,713	32,627
FY 07/08	30,617	32,241	31,055	35,448	40,029	30,892
FY 08/09	28,690	29,715	31,549	33,536	39,271	27,712
FY 09/10	25,631	28,722	29,544	34,240	37,037	26,989
FY 10/11	24,148	28,035	28,888	34,374	36,273	28,668
FY 11/12	22434	27902	27168	32011	34483	29463
FY 12/13	21078	27733	24654	31686	32616	29033

Difference 2012/13 - 2011/12 (percentage)	↓ 1356 (6.04%)	↓ 169 (0.6%)	↓ 2514 (9.25%)	↓ 325 (1.01%)	↓ 1867 (5.41%)	↓ 430 (1.45%)
Difference 2012/13 - 2000/01 (percentage)	↓ 7087 (25.15%)	↓ 10509 (27.69%)	↓ 3160 (11.36%)	↓ 7090 (18.28%)	↓ 7831 (19.36%)	↓ 6037 (17.21%)



## Crime Type Comparisons with Surrounding Boroughs

### 2000/01

	Violence Against The Person Total	Sexual Offences Total	Robbery Total	Burglary in a Dwelling	Theft/Taking Of Motor Vehicle	Theft From Motor Vehicle	Theft Person	Criminal Damage Total	Total Notifiable Offences
Greenwich	6308	343	469	1904	2443	2913	151	5057	28,165
Hackney	6320	371	2275	3130	2990	5104	879	4828	38,242
Lewisham	5331	372	1547	2494	2196	2240	307	4549	27,814
Newham	7344	334	2106	1839	3848	5176	649	6282	38,776
Southwark	7442	444	2162	2699	2483	3798	743	5279	40,447
Tower Hamlets	5965	383	1757	1878	2466	4374	538	4608	35,070

### 2011/12

	Violence Against The Person Total	Sexual Offences Total	Robbery Total	Burglary in A Dwelling	Theft/Taking Of Motor Vehicle	Theft From Motor Vehicle	Theft Person	Criminal Damage Total	Total Notifiable Offences
Greenwich	5305	365	756	1739	685	1912	666	2712	22434
Hackney	5393	370	1222	1347	899	1918	2831	2111	27902
Lewisham	6252	436	1557	2218	890	2192	743	2944	27168
Newham	6415	432	2458	2113	1495	3340	1735	2577	32011
Southwark	6610	503	2476	2182	1085	2074	2071	3023	34483
Tower Hamlets	5817	431	1415	1538	873	1944	1606	2464	29463

### 2012/13

	Violence Against The Person Total	Sexual Offences Total	Robbery Total	Burglary in A Dwelling	Theft/Taking Of Motor Vehicle	Theft From Motor Vehicle	Theft Person	Criminal Damage Total	Total Notifiable Offences
Greenwich	5293	325	554	1464	606	1700	735	2197	21078
Hackney	5693	367	1233	1432	687	2490	3146	1809	27733
Lewisham	5759	401	1340	2462	834	2105	773	2315	24654
Newham	6451	402	2260	1982	1075	3050	2352	2283	31686
Southwark	6490	415	2583	1924	895	1910	2663	2356	32616
Tower Hamlets	6119	380	1440	1390	842	1817	1816	2190	29033



DRAFT